



Coordinating and integrating state-of-the-art
Earth Observation Activities in the regions of
North Africa, Middle East and Balkans
and Developing Links with GEO related initiatives
toward GEOSS

GEO-CRADLE Pre Kick-Off Meeting
Friday, 18th of February, 2016
EGS networking event

EGS contribution to GEO-CRADLE project

Eleftheria Poyiadji
EOEG Deputy Chair
Institute of Geology and Mineral Exploration



IONIC Centre, 11 Lysiou Street
Athens, Greece



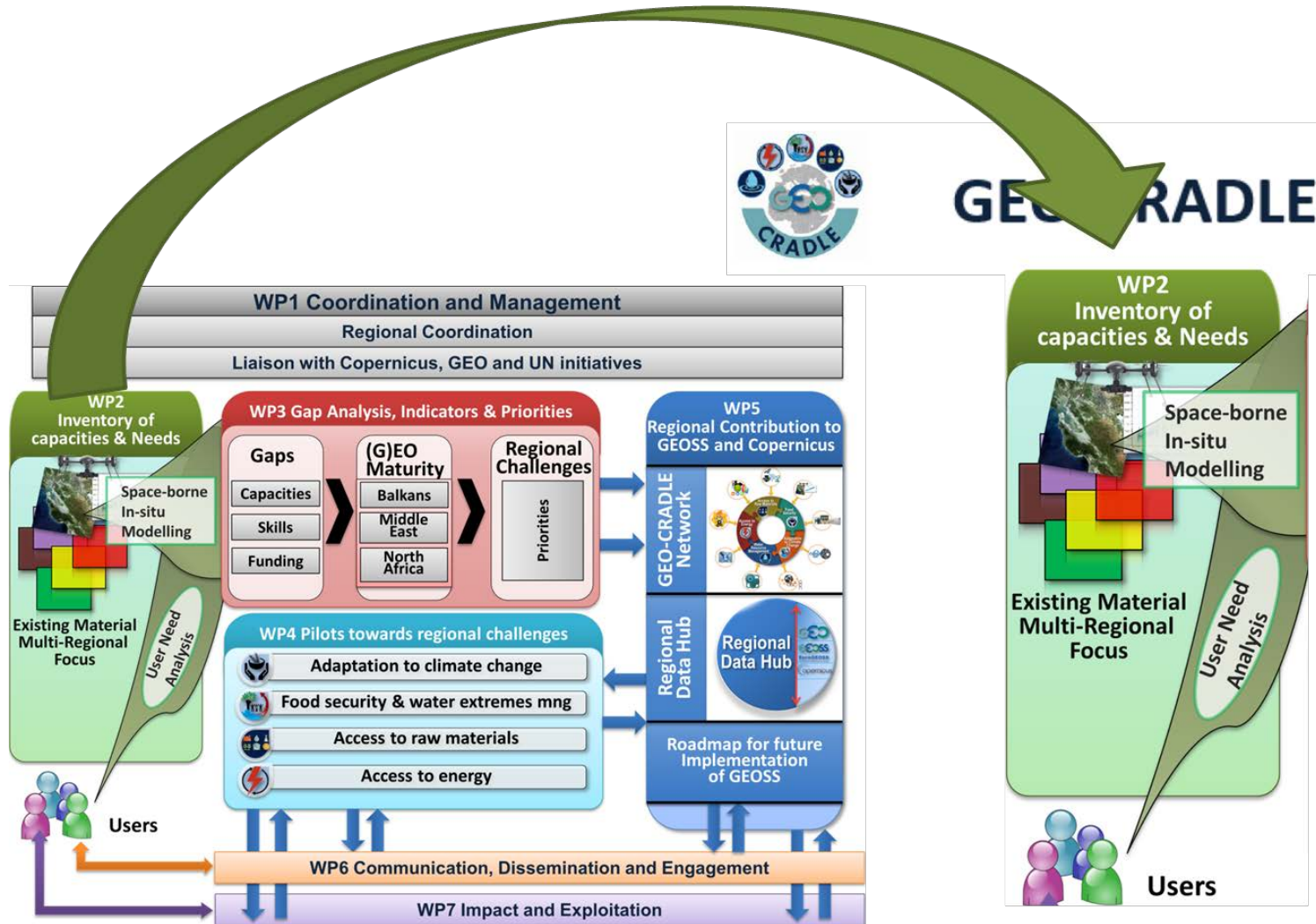


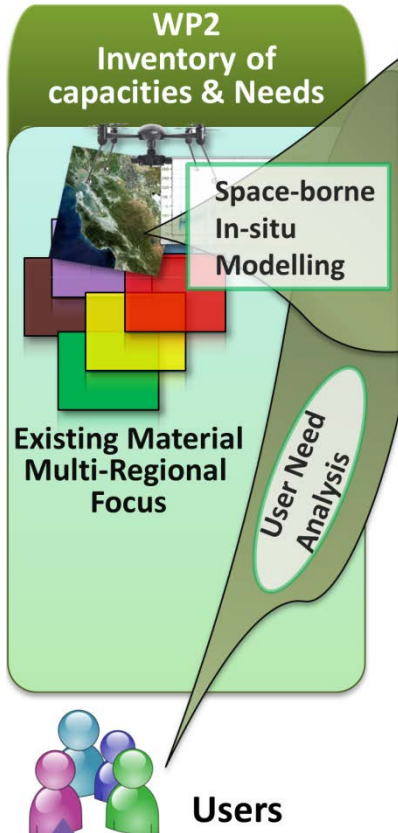
EGS contribution to GEO-CRADLE



EuroGeoSurveys contribution to GEO-CRADLE:

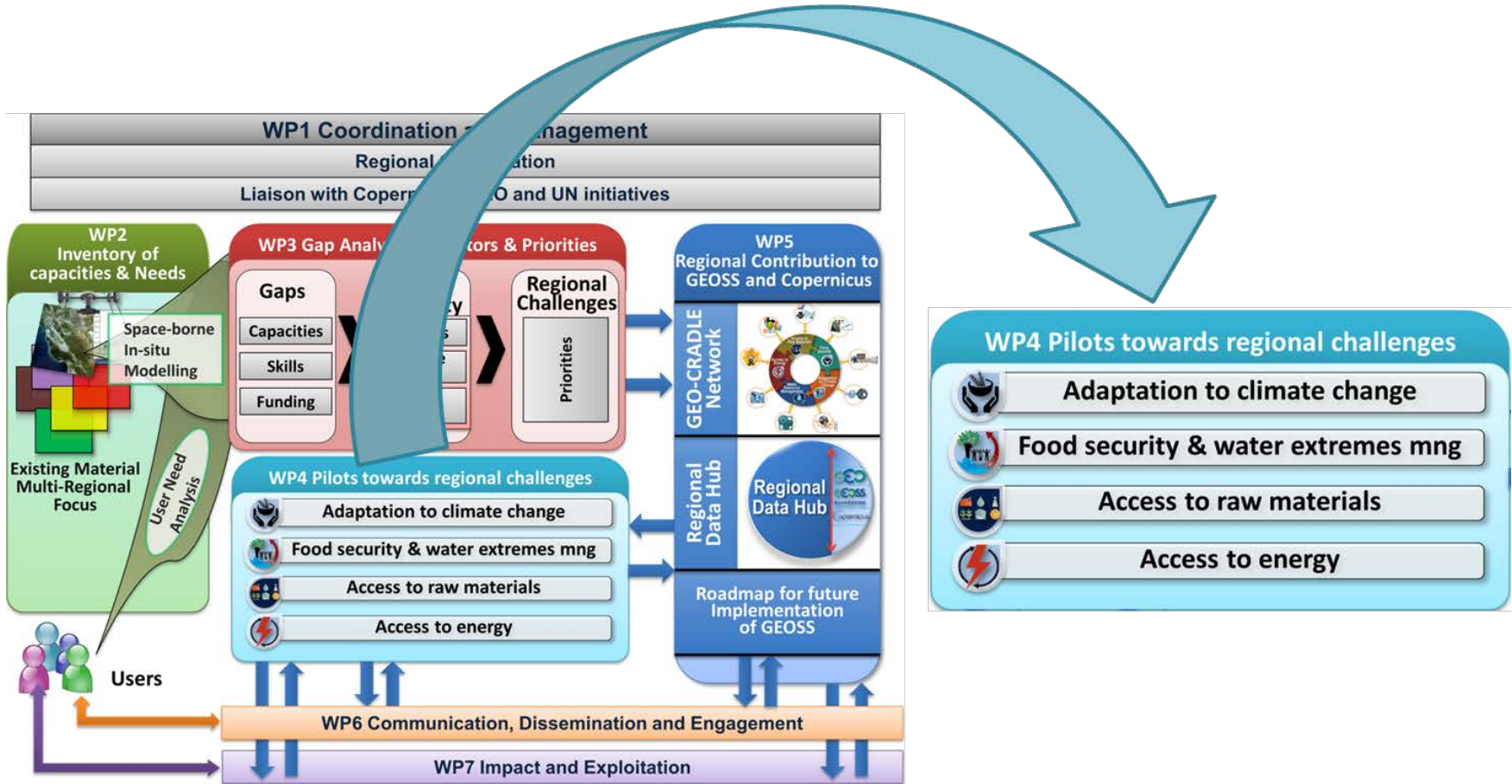
- Inventory of capacities in connection to in-situ networks, datasets, techniques.
- User needs analysis in relation to geological mapping enabling effective access to raw materials.
- Effective engagement of relevant stakeholders in RoI (geological surveys, end-users, etc.).
- Definition of the necessary steps towards improved access to raw materials – Raw materials Pilots.
- The interaction with relevant international initiatives and organisations (e.g. GEO, GSDI, etc.) to ensure proper alignment of GEO-CRADLE to their priorities/issues.





T2.2 In-Situ Networks

- To develop an inventory of the available in-situ infrastructure and networks in the RoI
- to determine their status and needs, targeting the collection and harmonisation of the existing inter-disciplinary datasets
- To support the efforts towards the integration of the fragmented environmental in-situ sensors available in the RoI.





Identification and integrated use of existing regional capacities and skills towards:

- (a) long term monitoring of ground deformation during or after mining activities,
- (b) mapping of waste materials left over in abandoned mines,
- (c) development of an appropriate protocol for the evaluation of the environmental impact, together with feasibility assessment of extractive or mining waste potential to become exploitable secondary resources.



EGS contribution to GEO-CRADLE



The Geological Surveys of Europe

Geological Surveys are both, **Providers of in situ data** and **Intermediate users** combining in situ data with space-born data

GEOL. SURVEY	COUNTRY
IGME-EL	Greece
PGI-NRI	POLAND
IGME-ES	Spain
AGS	Albania
CGS	Czech republic
GIR	Romania
GSD	Cyprus
GSFBH	Federation of Bosnia & Herzegovina
GSM	FYROM
GSM	Montenegro
GSRS	Rep Srpska
HGI_CGS	Croatia
KGS	Kosovo

Two EGS networking events

- **M0 Athens**
- **M9 Morocco**



EGS contribution to GEO-CRADLE



Athens EGS event

Experience from relevant projects

EO-MINERS and Minerals 4EU

FOREGS and GEMAS Geochemical Atlases of Europe

GEONICKELL

SNAP-SEE

PROMINE

GEOMIND and INGEOCLOUDS

Area involved

Starting point

Objectives

Results

Gaps

Users' needs

Adaptation to climate change

Food security and water extremes management

Access to raw materials and energy



EGS contribution to GEO-CRADLE



Athens EGS event

Experience from relevant projects

Established networks in the RoI

Examples of applications useful for the definition of user needs

Adaptation to climate change

Food security and water extremes management

Access to raw materials and energy



EGS contribution to GEO-CRADLE



Athens EGS event

Participating National Geological Surveys

- Existing networks in Balkans, Middle East and North Africa
- Past projects experience (in your country or broader)
- Existing in situ data in your survey (**availability**)
- Possible stakeholders in your country (data holders, users, authorities)
- Relevant legislations and IPR issues, convergence with internationally used codes
- Any existing templates of questionnaires



EGS contribution to GEO-CRADLE



Thank You!!!
Σας Ευχαριστώ!!!