



Coordinating and integrating state-of-the-art  
Earth Observation Activities in the regions of  
North Africa, Middle East and Balkans  
and Developing Links with GEO related initiatives  
toward GEOSS

---

**GEO-CRADLE Pre Kick-Off Meeting**  
**Friday, 18<sup>th</sup> of February, 2016**  
**EGS networking event**

**EuroGeoSurveys**  
**Geological Institute of Romania**  
**Romania**

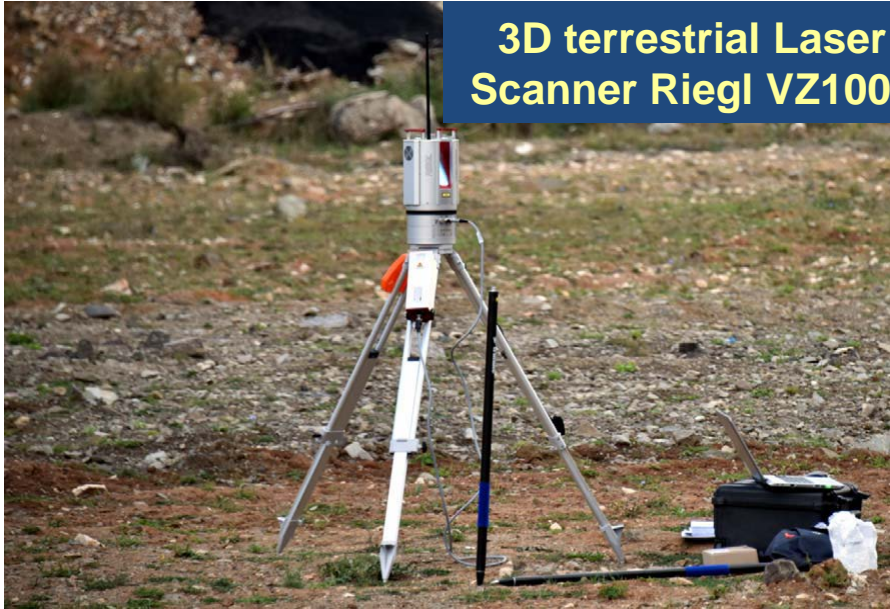


***Raluca Maftai, Marian Munteanu***



# Equipment

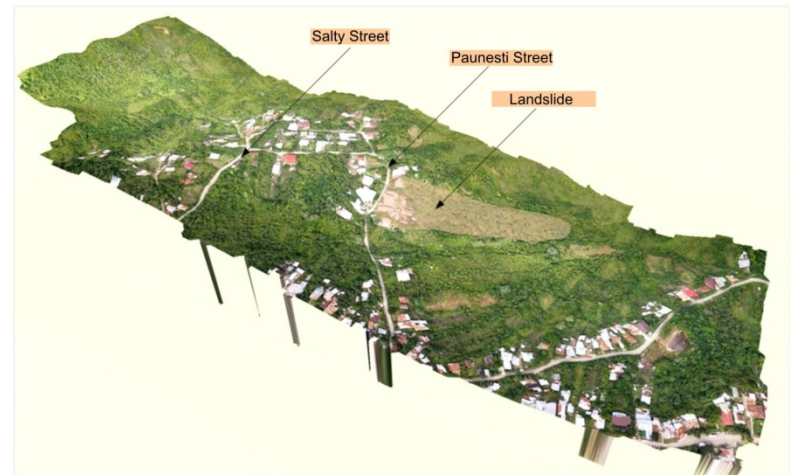
**3D terrestrial Laser Scanner Riegl VZ1000**



**Ground penetrating RADAR Akula 9000C**



**Unmanned Aerial Vehicle**



3D image of the northern part of Gornet village, Prahova County (Romania), based on the aerial photographs collected with the UAV.



# GIR Past Projects experience

---

**SafeLand** - Living with landslide risk in Europe: Assessment, effects of global change and risk management strategies

FP7-ENV-2008-1

Duration: 2009-2012



**Digisoil** - Integrated system of data collection technologies for mapping soil properties

FP7-ENV 2007

Duration: 2008-2011



**PanGeo** - Enabling access to geological information in support of GMES

FP7-SPACE-2010-1

Duration: 2011-2014



**SUSMIN** - Tools for sustainable gold mining in EU

ERA-MIN ERA-NET program

Duration: 2014-2016





# Existing in situ data in the Geological Institute of Romania.

---

**Data produced by previous projects regarding landslides and stability of mine waste dumps.**

**Ortophoto plans/maps and 3D models of the studied areas, with real time imaging of the sites and a high level resolution.**

**Magnetic data recorded by the Surlari National Geomagnetic Observatory (integrated in INTERMAGNET and EPOS). Daily files in binary and ASCII (IAGA2002 format).**

**Spatial data concerning the mineral aggregate deposits (resulted from SARMa project).**

**Spatial data on the distribution of ore resources in Romania.**





# Existing networks

---

**National magnetic network (repeat stations for magnetic components of the main field).**

**Meteorological and hydrological networks.**

**Seismological networks (national, Black Sea and geodynamically active Vrancea zone).**





# Possible stakeholders in Romania

---

**Ministry of Environment - authority**

**National Agency for Cadastre and Land Registration - authority**

**Romanian Civil Aeronautic Authority – geomagnetic data user**

**Romanian Air Traffic Services Administration – geomagnetic data user**

**Romanian Spatial Agency – data holder, user**

**Institute of Space Science – data holder, user**

**National Meteorological Administration – data holder, user**

**Military Topographic Direction – aero photogrammetry data (data holder)**

**National Center of Cartography (data holder)**

**Institute of Geodynamics (data holder, user)**

**Institute of Earth Physics (data holder, user)**

**Universities (Bucharest, Cluj-Napoca, Iasi, Petrosani, Timisoara etc) - users.**





## Relevant legislation

---

**Decree no. 4/2010, regarding the institution of the data spatial infrastructure in Romania (for the implementation of INSPIRE Directive in Romania)**

**Law 262/2011 Ratification of Romania's accession to European Space Agency**

**Water Law 107/1996**

**Law 214/2011 for lawn organization, administration and exploitation**

**Mountain Law 347/2004**

**Mining Law 85/2003**

