



Coordinating and integrating state-of-the-art
Earth Observation Activities in the regions of
North Africa, Middle East and Balkans
and Developing Links with GEO related initiatives
toward GEOSS

GEO-CRADLE pre-Kick-Off Meeting
Friday, 18th of February, 2016

Republic of Kosovo

KOSOVO GEOLOGICAL SURVEY

Mr. Fidaim Sahiti



IONIC Centre, 11 Lysiou Street
Athens, Greece





COMPETENT INSTITUTIONS FOR GEOLOGY SECTOR IN KOSOVA ARE:

- Ministry of Economic Development (MED)
- Kosovo Geological Survey (KGS)
- Independent Commission for Mines and Minerals (ICMM).

Mining Sector Regulatory frameworks

- ❑ The main principles of the policy of the Government to exploitation of mineral resources based on :
 - Constitution of the Republic of Kosovo;
 - Law on Mines and Minerals; No. 03/L-163
 - Low for Geological Survey; No. 04/L-232
 - Mining Strategy;
 - Management plan for mineral resource.
 - Program implementation on Mining Strategy





Geological-Geotectonic Setting

- From the geological point of view, Kosovo is in a very interesting territory. The area of Kosovo is characterised by a variety of geological formations
- Kosovo has a varied geology that ranges in age from the Neo-Proterozoic to the holocene

Figure 1: Geotectonic Units of Central Balkan. modified after SCHÖNENBERG & NEUGEBAUER, 1997; DIMITRIJEVIĆ, 1999; MEČO & ALIAJ, 2000 et al.

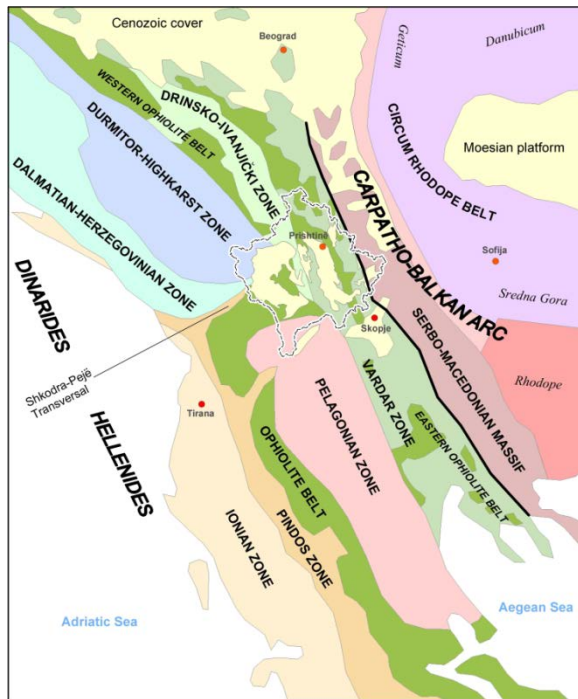
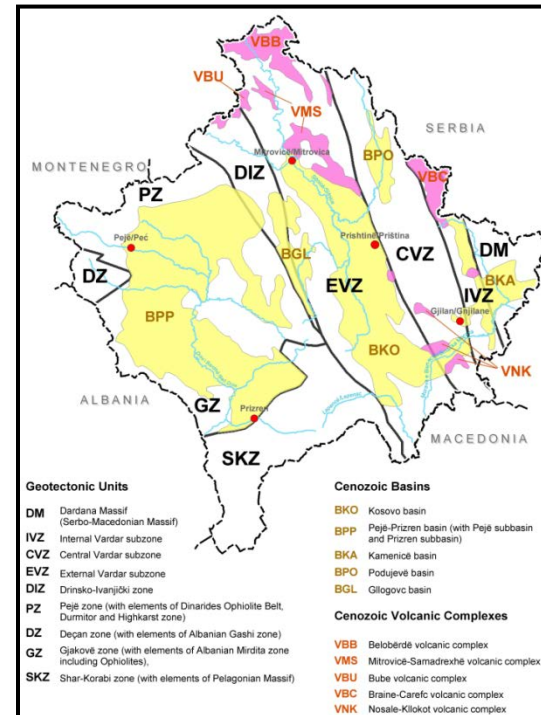


Figure 2 Geotectonic Units of Kosovo.

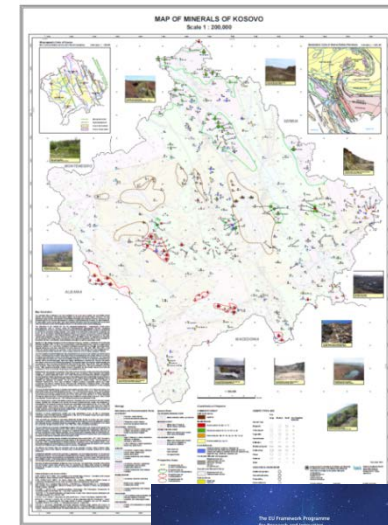
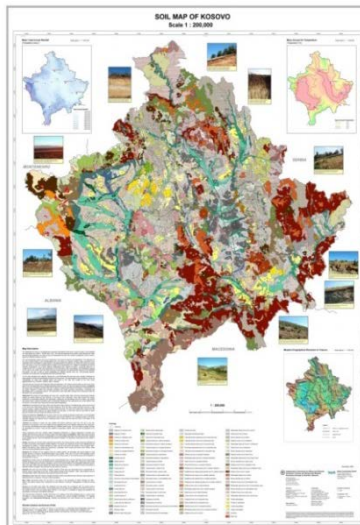
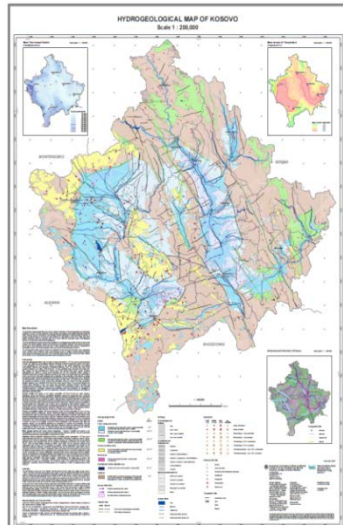
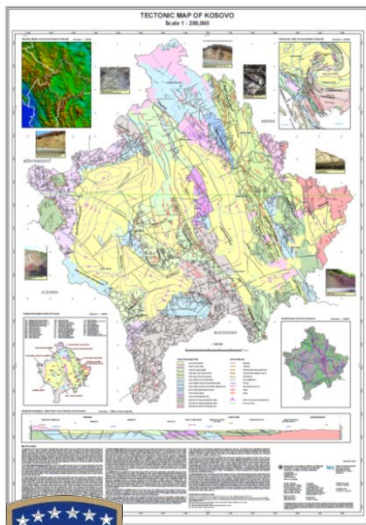
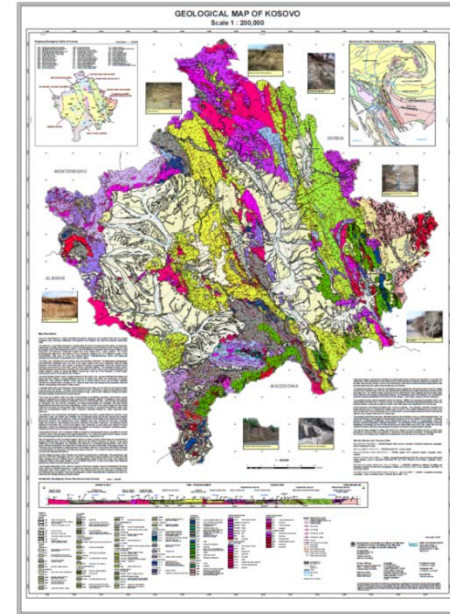




GeoScientific Maps

Kosovo Geoscientific map technical program resulted with a series of 1: 200.000 scale maps that show following features;

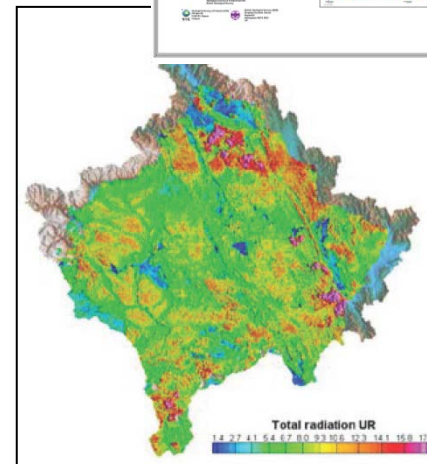
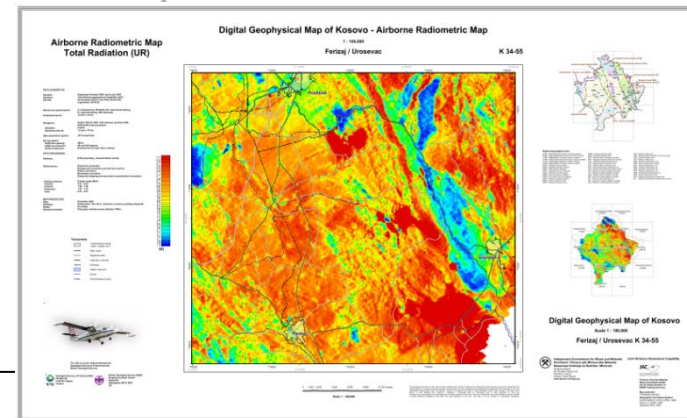
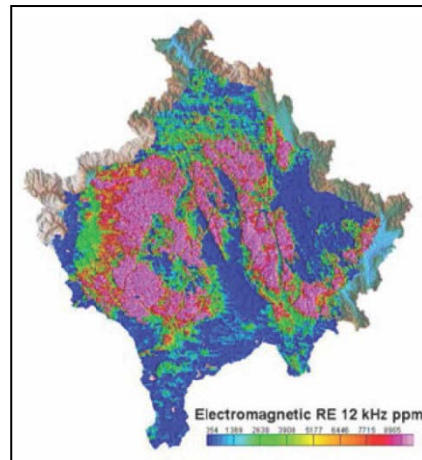
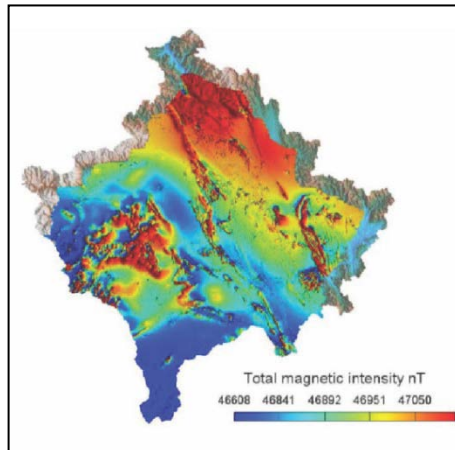
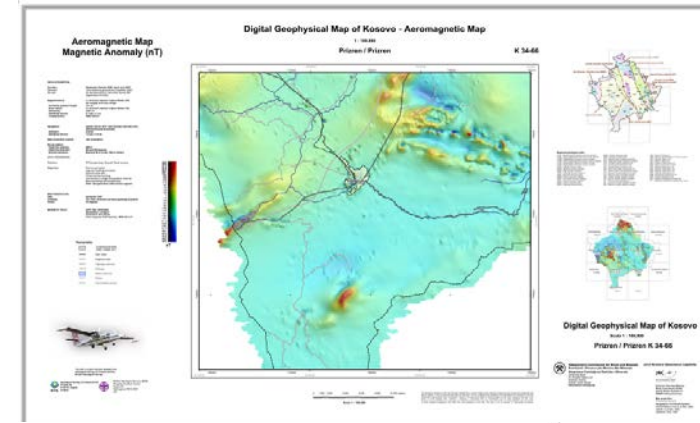
- Geological Maps of Kosovo
- Tectonic Map of Kosovo
- Map of Minerals of Kosovo
- Hidrogeological Map of Kosovo
- Map of Mineral-And Thermal Water of Kosovo
- Morpho-Orographical Structure of Kosovo
- Soil Map of Kosovo





Map. Airborne Geophysical Survey Data 2006 – 2007.

- Magnetics Map of Kosovo
- Electro-Magnetics Map of Kosovo
- Potassium Radiometrics Map of Kosovo

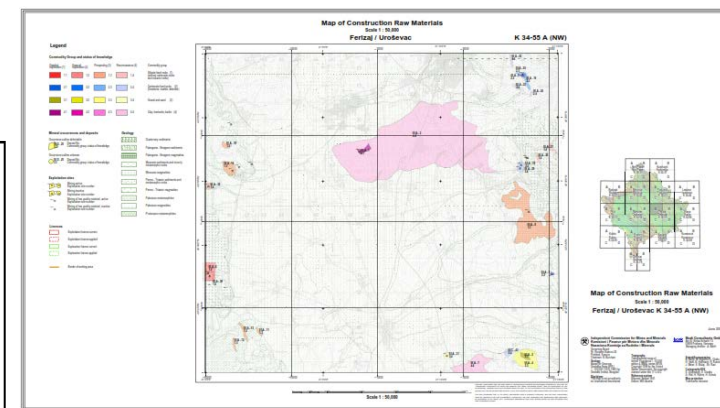
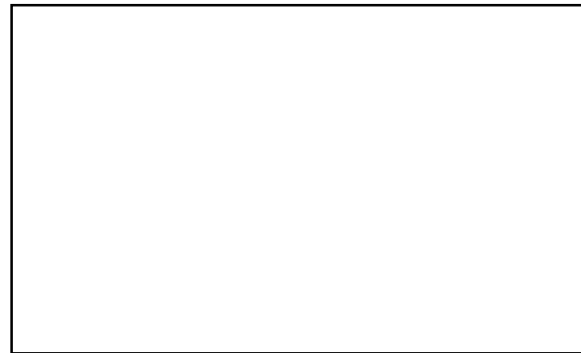
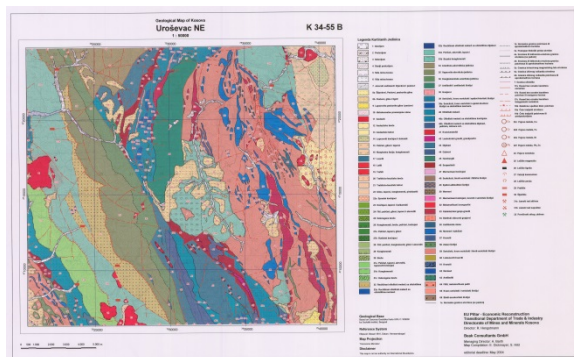
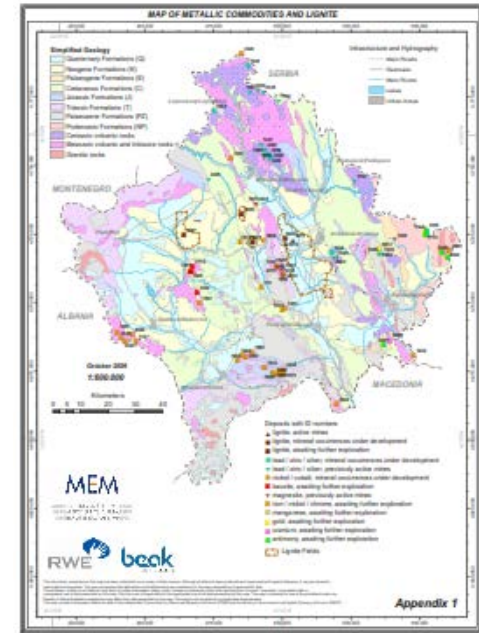




Maps of Construction Raw Materials Scale of 1:50,000

A series of 1: 50,000 scale maps that show

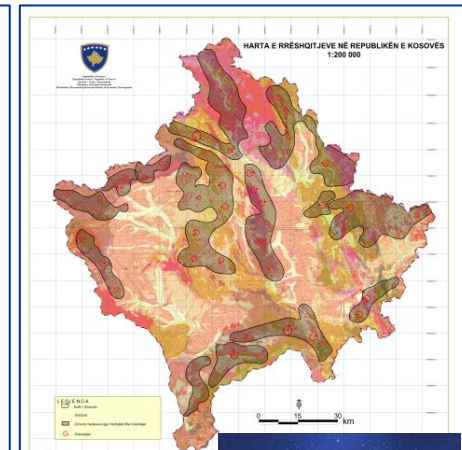
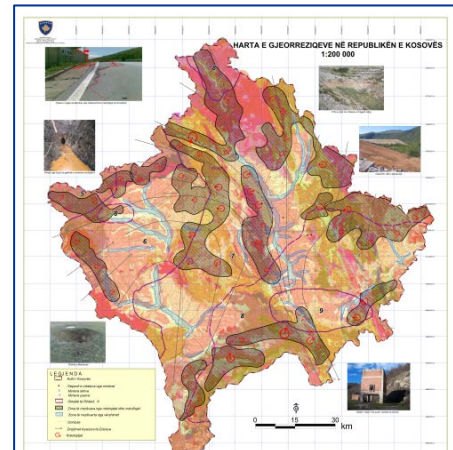
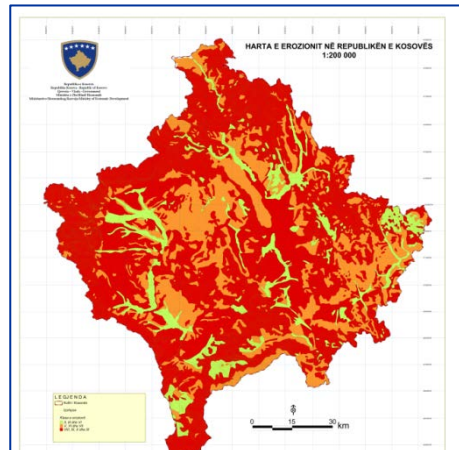
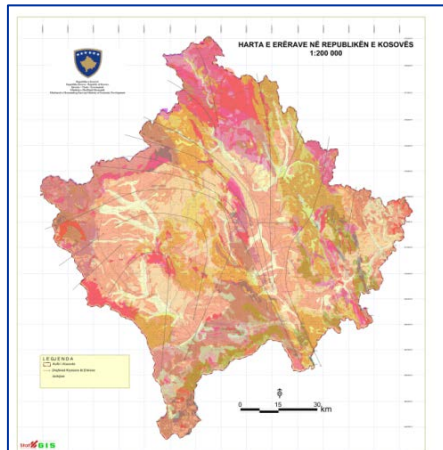
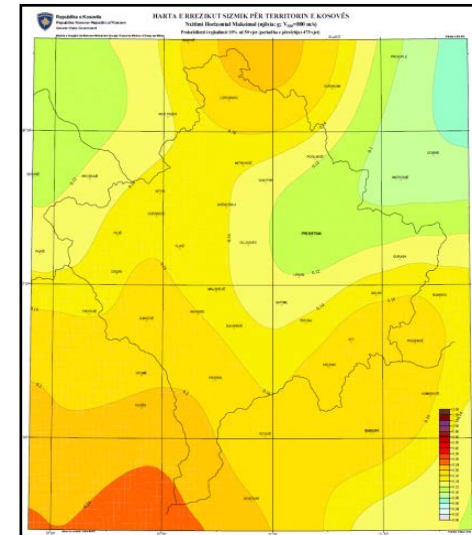
- Base map of the captured Construction Raw Material
- Map of Non Blocked Construction Raw materials
- Map of Deposit Minerals
- Map of Deposit licensed Status
- Map of Deposit protection Value





Geo-hazards Map of Kosovo

- Seismic risk map of Kosova
- Wind Map of Kosova scale 1: 200.000
- Erosion Map of Kosova scale 1: 200.000
- Geo harzards Map of Kosova 1: 200.000
- Landslides Map of Kosova scale 1: 200.000



Corinne Land Cover Map and State Geoportal

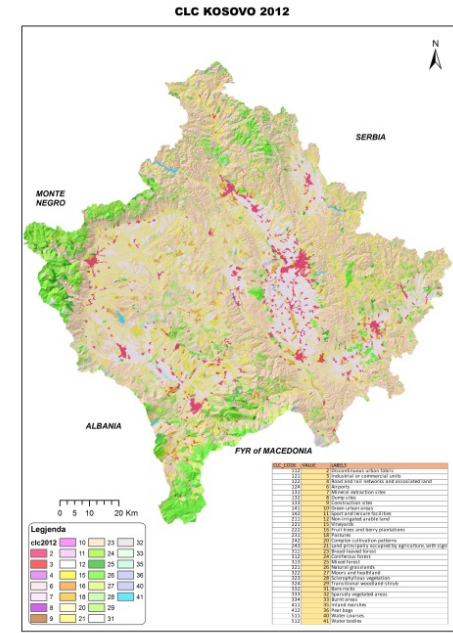
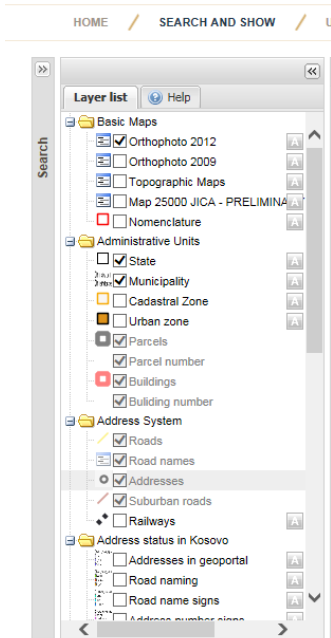


- Artificial Surfaces
- Agricultural Areas
- Forest and semi natural areas
- Wetlands
- Water Bodies

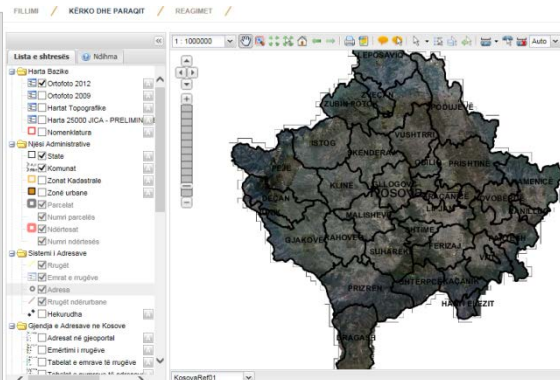
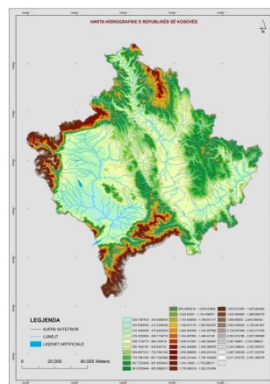
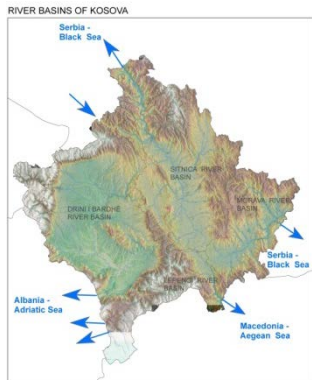
State Geoportal

<http://www.kca-ks.org>

- Basic Map
- Administrative unit
- Address system
- Referent network



Level 1	Level 2	Level 3	Grid Code	RGB	
1. ARTIFICIAL SURFACES	1.1 Urban fabric	1.1.1 Continuous urban fabric	230-000-077		
		1.1.2 Discontinuous urban fabric	230-000-000		
	1.2 Industrial, commercial and transport units	1.2.1 Industrial or commercial units	200-077-242		
		1.2.2 Road and rail networks and associated land	200-000-000		
	1.3 Port areas	1.3.1 Port areas	230-200-200		
	1.3.2 Airports	1.3.2 Airports	230-200-230		
	1.3.3 Mineral extraction sites	1.3.3 Mineral extraction sites	100-077-000		
	1.3.4 Construction sites	1.3.4 Construction sites	230-077-255		
	1.4 Artificial non-agricultural vegetated areas	1.4.1 Green urban areas	100-100-255		
		1.4.2 Sport and leisure facilities	100-230-255		
	2. AGRICULTURAL AREAS	2.1 Arable land	2.1.1 Non-irrigated arable land	12-255-158	
			2.1.2 Permanently irrigated land	12-255-200	
		2.2 Permanent crops	2.2.1 Olive groves	14-230-200-000	
		2.2.2 Fruit trees and berry plantations	10-242-188-077		
		2.2.3 Other cropland	10-230-200-000		
2.3 Pastures		2.3.1 Pastures	10-230-230-077		
2.4 Heterogeneous agricultural areas		2.4.1 Annual crops associated with permanent crops	16-230-230-188		
		2.4.2 Complex cultivation patterns	20-285-200-077		
	2.4.3 Land primarily occupied by agriculture, with significant areas of natural vegetation	21-230-200-077			
	2.4.4 Agro-forestry areas	23-242-200-188			
3. FOREST AND SEMI-NATURAL AREAS	3.1 Forests	3.1.1 Broad-leaved forest	23-188-255-000		
		3.1.2 Coniferous forest	20-000-188-000		
		3.1.3 Mixed forest	20-077-255-000		
	3.2 Shrub and herbaceous vegetation associations	3.2.1 Natural grasslands	20-200-242-077		
		3.2.2 Moors and heathland	21-188-255-128		
4. WETLANDS	4.1 Wetlands	4.1.1 Coastal marshes	30-077-077-255		
		4.1.2 Peat bogs	30-077-077-255		
	4.2 Marine wetlands	4.2.1 Salt marshes	30-230-230-255		
		4.2.2 Saltpans	30-230-230-255		
5. WATER BODIES	5.1 Inland waters	5.1.1 Inland waters	40-200-200-242		
		5.1.2 Water bodies	41-188-242-230		
	5.2 Marine waters	5.2.1 Coastal lagoons	40-230-230-188		
	5.2.2 Estuaries	41-188-255-230			
	5.2.3 Seas and oceans	44-230-242-230			
6. UNCLASSIFIED	No Data		48		
	No Data		50-230-242-255		





Coordinating and integrating state-of-the-art
Earth Observation Activities in the regions of
North Africa, Middle East and Balkans
and Developing Links with GEO related initiatives
toward GEOSS

THANK YOU FOR YOUR ATTENTION!



*IONIC Centre, 11 Lysiou Street
Athens, Greece*

