

PE VOJVODINAŠUME

Petrovaradin



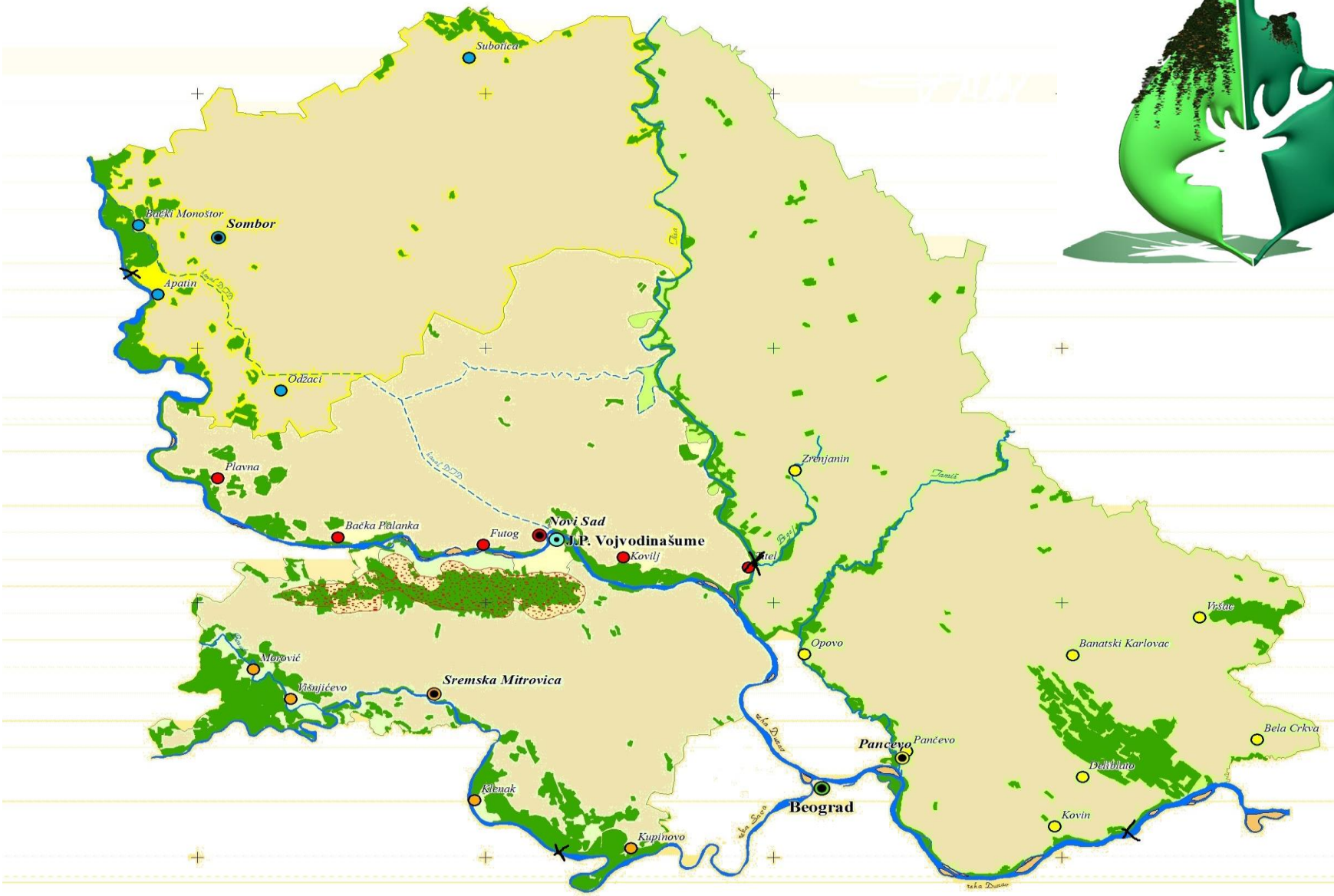
Remote Sensing in Support of Sustainable Forest Management in PE Vojvodinasume

Bojan Tubić, BsC Forestry

Novi Sad 14.07.2016.



Forests in AP Vojvodina



ORGANISATIONAL STRUCTURE

Assembly of AP Vojvodina

Supervisory Board

DIRECTOR

DIRECTORATE

Forestry Sector

Forest Utilization Sector

Economic Affairs and Marketing
Sector

Hunting and Fishery Sector

Legal Sector

Development Sector

Financial Sector

FOREST ESTATES (FE)

Planning and Management
Service

Forest Utilization Service

Service for Hunting and
Nonwood Products

Service for Comerica Affairs
and Marketing

Service for Financial and
Accounting Affairs

Service for Legal,
Personnel and General
Affairs

FOREST
SUBESTATES (Basic
productive units)

JP Vojvodinašume

FE Novi Sad

**FE Sremska
Mitrovica**

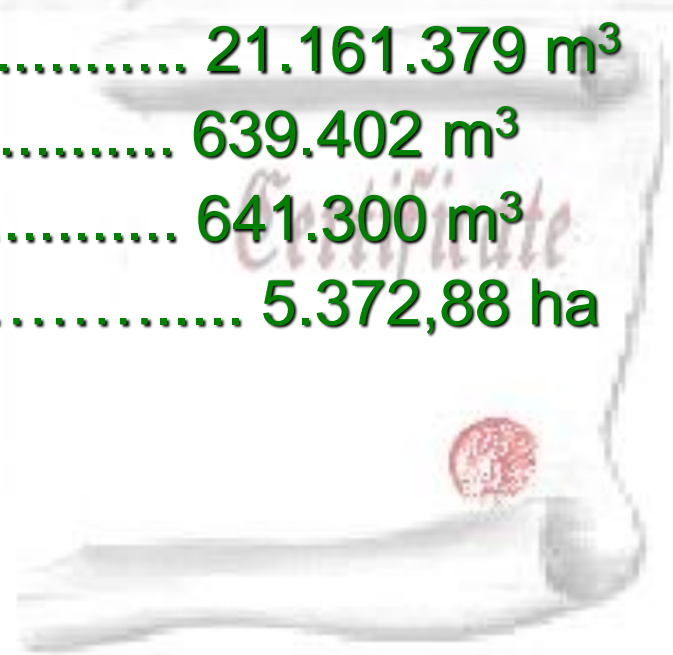
FE Sombor

**FE Banat -
Pančevo**

**Vojvodinašume -
Lovoturs**

GENERAL FIGURES

- ❖ Total forested and bare land area 128.971,04 ha
- ❖ Forests and fertile forest land area 103.561,42 ha
- ❖ Forests and forest plantations area 98.634,34 ha
- ❖ Forests area 62.145,25 ha
- ❖ Forest intensive plantations area 36.489,09 ha
- ❖ Standing wood volume 21.161.379 m³
- ❖ Annual wood increment 639.402 m³
- ❖ Annual wood cutting vol. (Etat) 641.300 m³
- ❖ Expert's services in private forests 5.372,88 ha



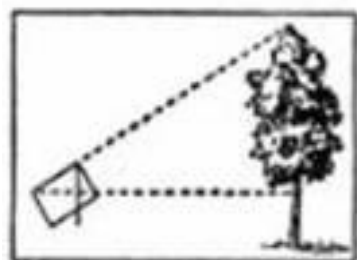
Modern technologies

Data collection

- ❖ Electronic calipers (Haglof)
- ❖ Electronic hypsometer (Vertex)
- ❖ GPS devices (Garmin, Trimble Geoexplorer, Trimble Juno)
- ❖ Satellite and aerial imagery
- ❖ Sensefly eBee

Data processing

- ❖ Database (geodatabase, SDE, SQL)
- ❖ Specific softwares (for forestry)
- ❖ GIS (WinGIS, ESRI ArcGIS)



Remote sensing

- Orthophotos (Mapsoft, GeoInfo, Infomap)
- Satellite images – *WorldView2, GeoEye* (GISDATA, VECOM)
- Sensefly eBee (drone flights)

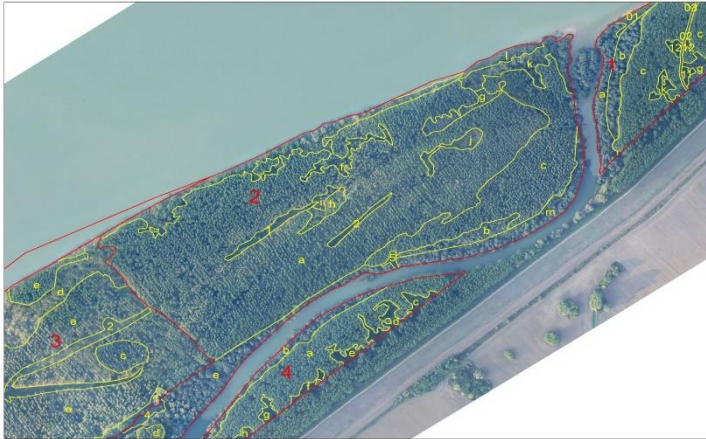


Application

- ❖ Forest stand delineation
- ❖ Forest inventory
- ❖ DEM
- ❖ Mapping
- ❖ Monitoring
- ❖ Spatial analysis
- ❖ Modelling, scenarios



Examples



Stand delineation



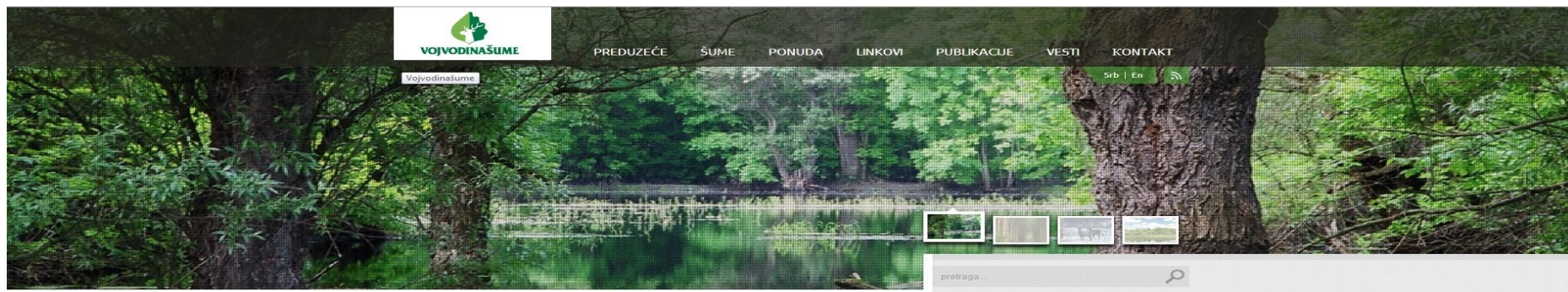
Damage caused by wind



Damage caused by climate change



Damage caused by recent fires



www.vojvodinasume.rs



PE “VOJVODINAŠUME”

**Preradovićeva 2,
21131 Petrovaradin
Tel: 021/431-144 (centrala)
Fax: 021/6433-139**

btubic@vojvodinasume.rs