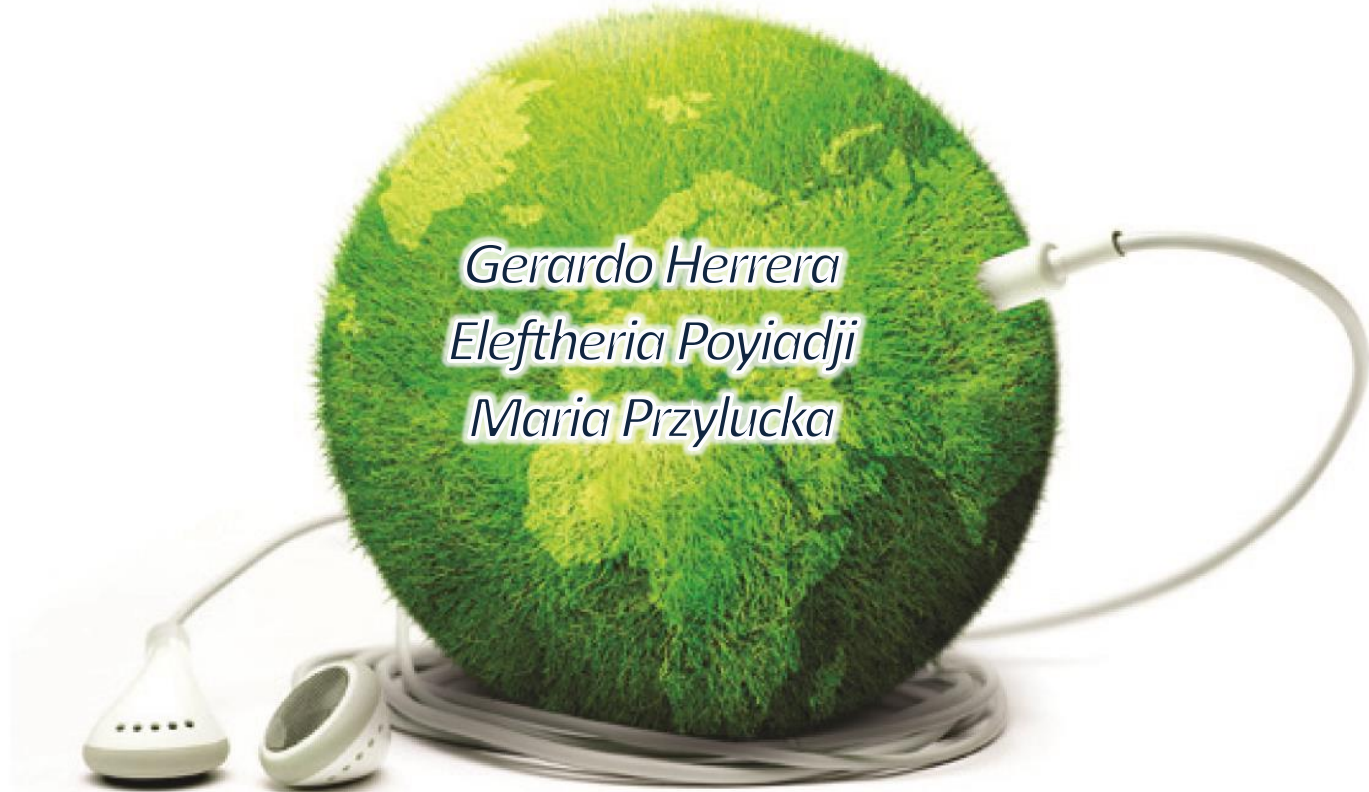


## *Earth Observation and Geohazards Expert Group from EuroGeoSurveys*



*Gerardo Herrera  
Eleftheria Poyiadji  
Maria Przylucka*

# EOEG

## Mission and vision

21+ 7

- Apply Earth Observation technology to improve geoscience delivery on geohazards and mineral resources cycle.
- Deliver harmonized Earth Observation based geo-information improving the operational capacity and economic capabilities of governments, institutions, organizations, businesses and individuals.



## 2. EO Geohazards activities

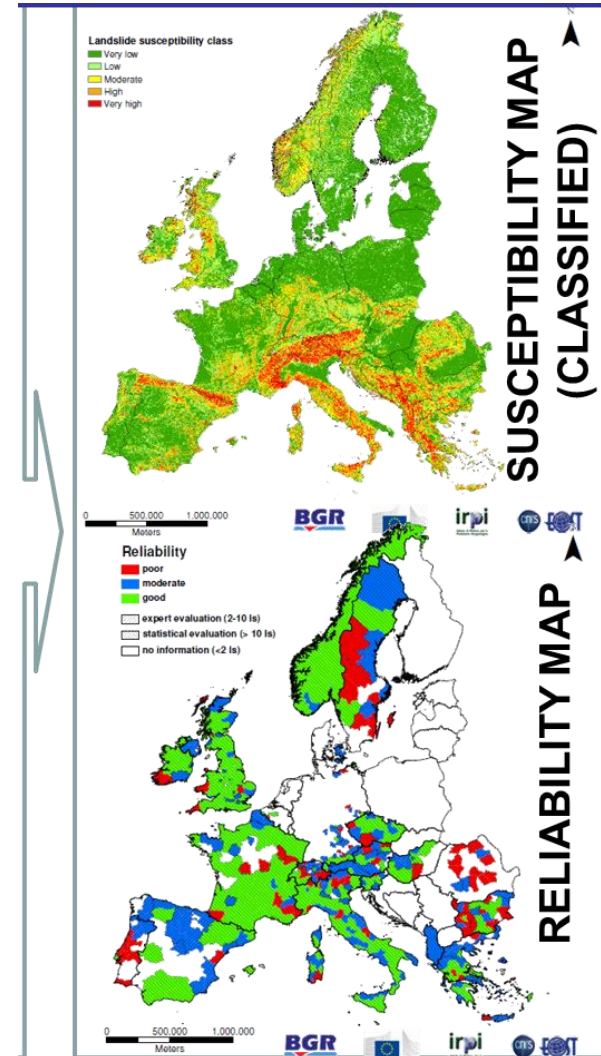
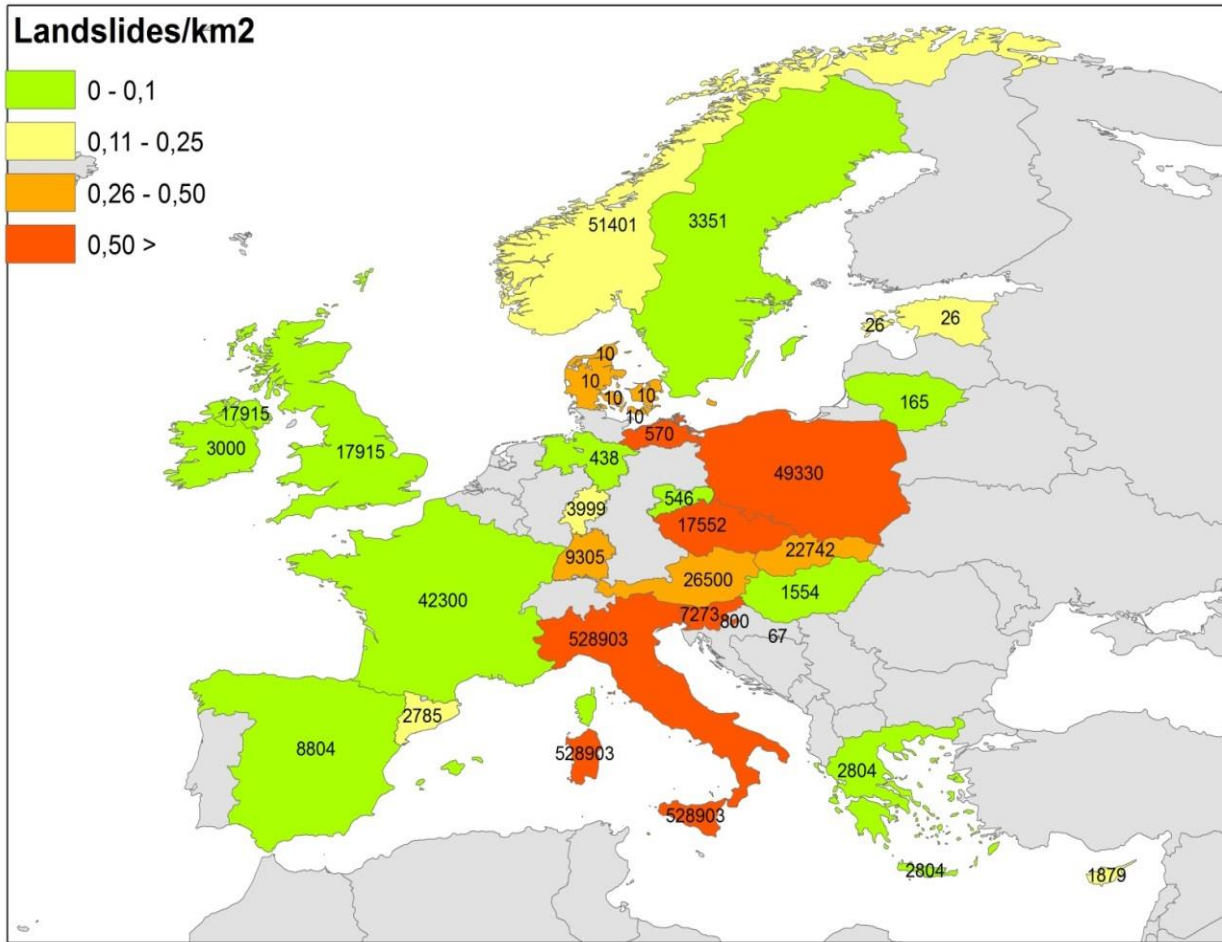
- Geohazards inventories
- Susceptibility & hazard & risk analysis
- Radar remote sensing monitoring
- In situ monitoring networks
- Local scale numerical modeling



INQUA  
International Union for Quaternary Research

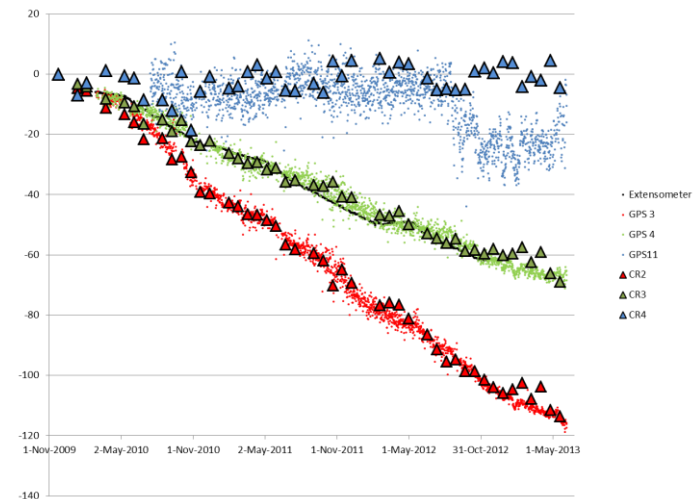
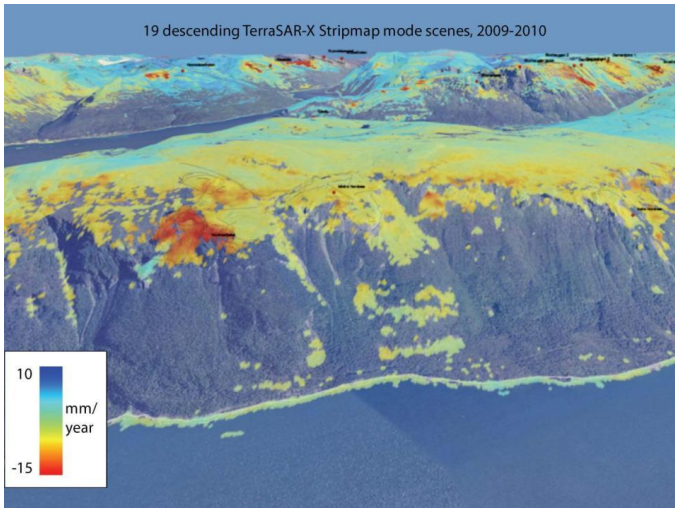
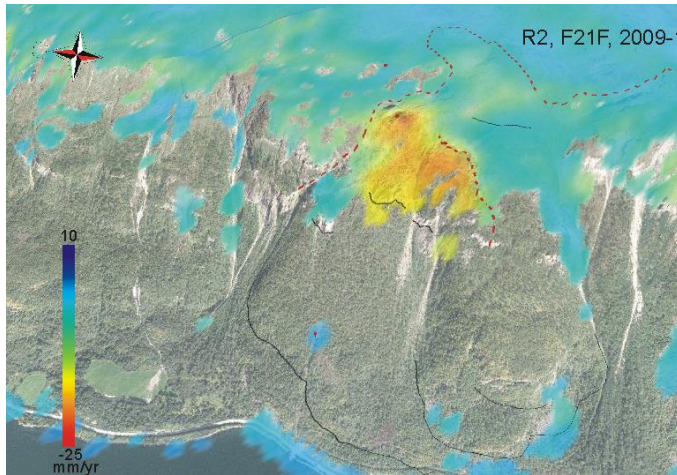


### EGS Landslide & subsidence databases: 801234 records

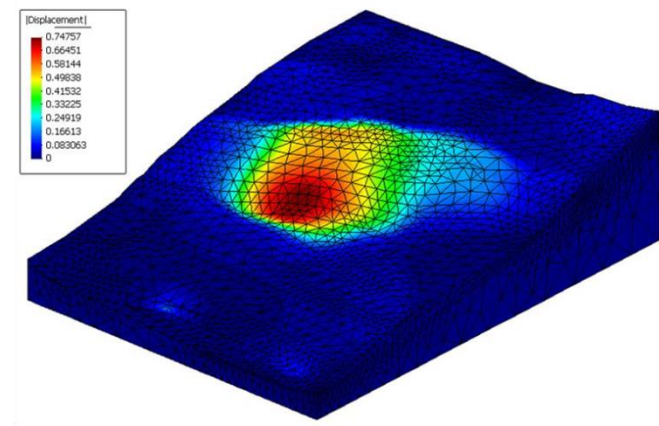
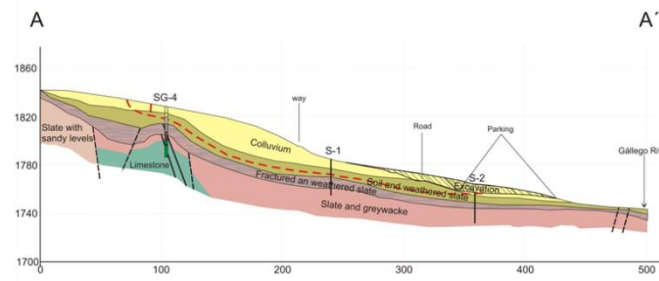
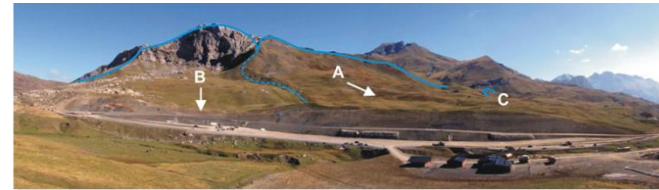
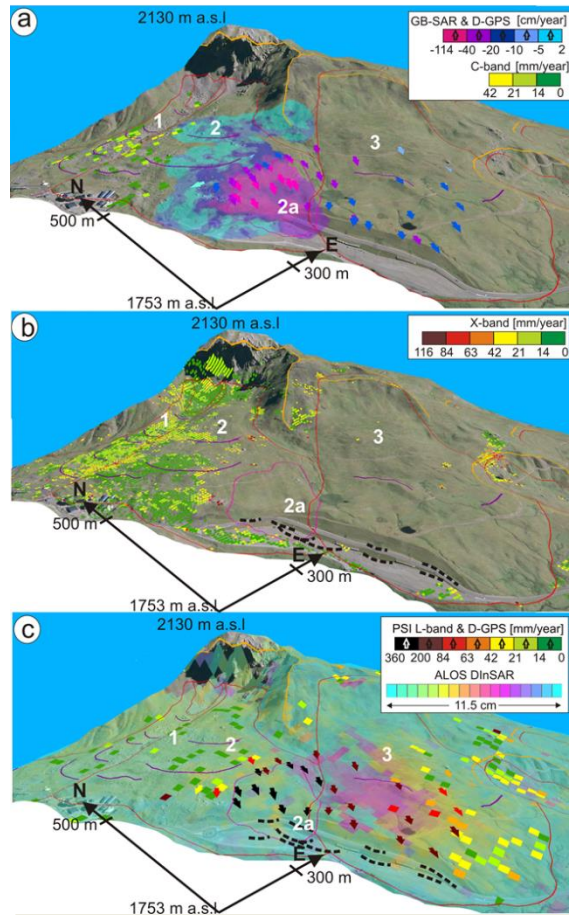


## 2. EO Geohazards: Radar remote sensing

Determine the state of activity of landslides phenomena



### Implement coordinated in situ monitoring systems: simulation of landslide failure and propagation



LAMPRE

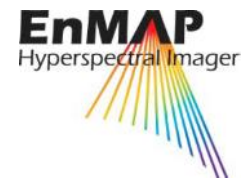
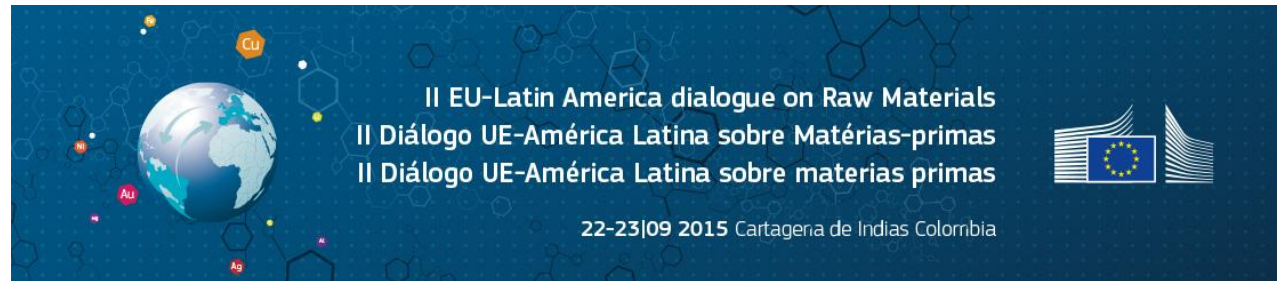


Instituto Geológico y Minero de España



### 3. EO Mining related activities

- Geological mapping regional scale
- Mineral mapping in mining areas
- Monitoring mining activities
- Mining risk assessment

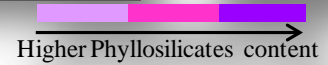
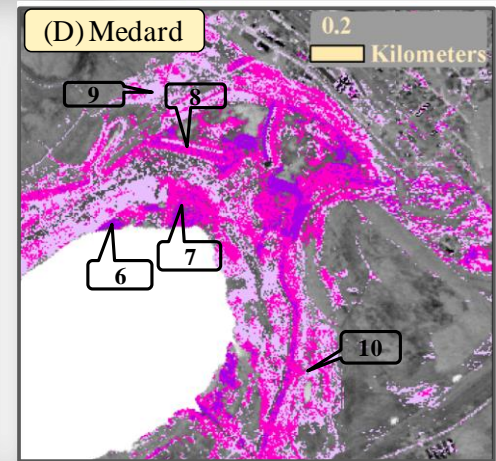
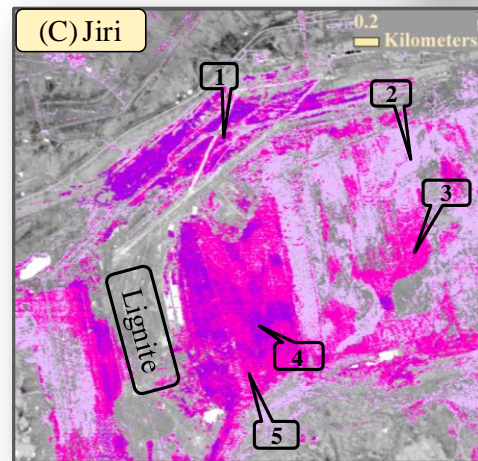
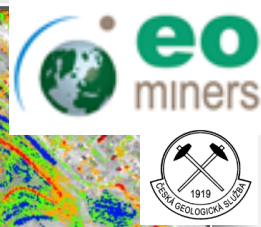
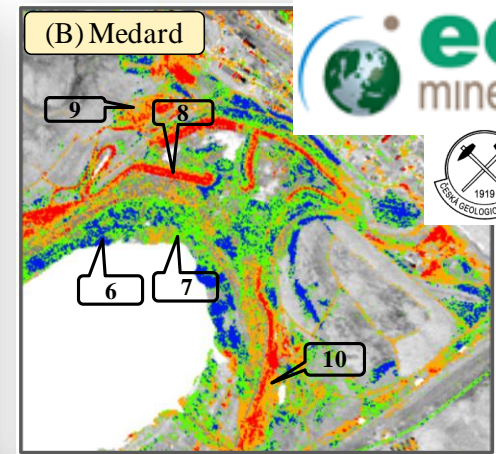
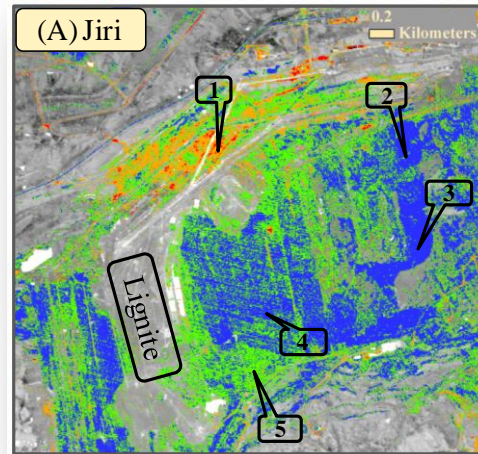


### 3. EO mining: mineral mapping

Mineral thematic map showing surface geological materials from hyperspectral data

*Sokolov Lignite Open-Pit Mines, Czech Republic*

Notesco, G. – Kopačková V. – Rojík, P. – Schwartz, G. – Livne, I. – Ben-Dor, E. (2014): Mineral Classification of Land Surface Using Multispectral LWIR and Hyperspectral SWIR Remote-Sensing Data. A Case Study over the Sokolov Lignite Open-Pit Mines, the Czech Republic. – Remote Sensing 6, 8, 7005-7025. ISSN 2072-4292 (on line). DOI 10.3390/rs6087005.





# *EARTH OBSERVATION AND GEOHAZARDS*

