



Coordinating and integrating state-of-the-art
Earth Observation Activities in the regions of
North Africa, Middle East and Balkans
and Developing Links with GEO related initiatives
toward GEOSS

GEO-CRADLE Pre Kick-Off Meeting
Friday, 18th of February, 2016
EGS networking event

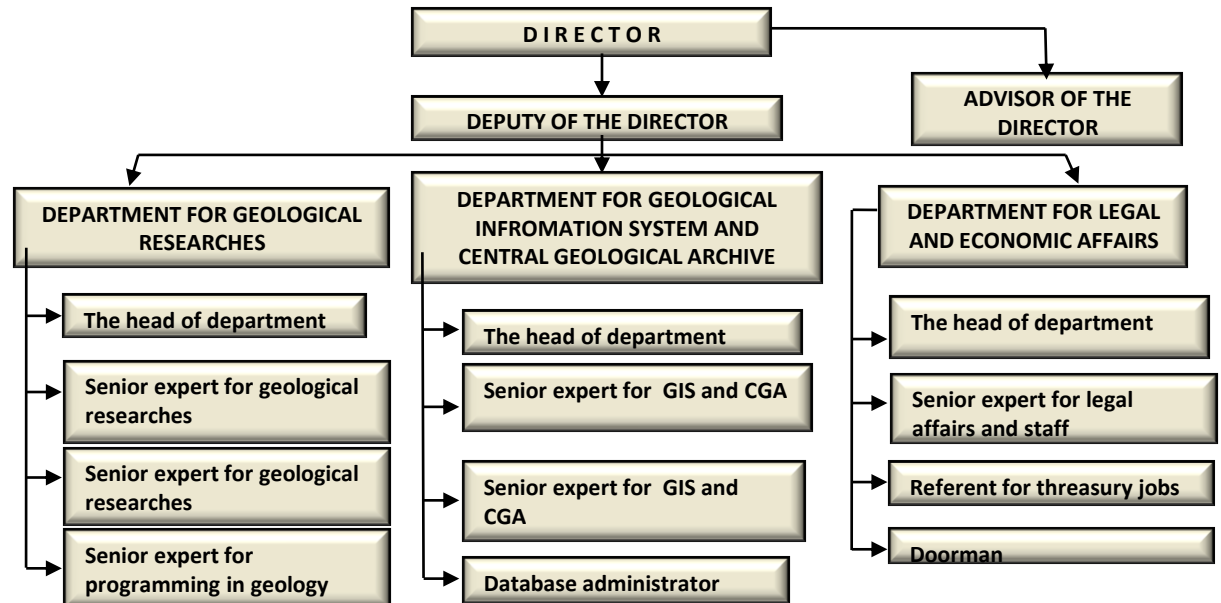
EuroGeoSurveys
Geological Survey of the Republic of Srpska
Bosnia and Herzegovina



About the Geosurvey of the Republic of Srpska



- After disintegration of the Geosurvey of B&H in 1992 (established in 1912) the Geological Survey of the Republic of Srpska represents one of two its successors.
- The Geosurvey is a part of the Ministry of Industry, Energy and Mining.
- The main task of the Survey is programming and performing the basic geological explorations.
- Currently 12 employees.
- The basic document for future Geosurvey activities is The long-term strategy of geological exploration 2015-2029 adopted by national Parliament.





GeoSurvey Networking

The GeoSurvey is an associated member of the EGS.

The Survey has signed MoC with geological surveys of Serbia, Croatia and Austria.

The Survey also cooperate with practically all surveys of the former Yugoslav republics (beside Croatia and Serbia there are also geological surveys of Slovenia, FB&H, Montenegro and Macedonia).

Preparation of the MoC with PR China is in progress.

Cooperate intensively with Faculty of mining and geology of Belgrade University. Common organisation of “International Sumer Karst School” in the Eastern Herzegovina region – homeland of the karst. The school gather teachers and students all over the world.

<http://www.karst.edu.rs/en/documents/pdf/edukacija/skola-karsta-trebinje/Trebinje%20Karst%20School%20Leaflet%20May%20June%202016.pdf>



Past projects experience - in the country

-Geological Maps (geological, hydrogeological, geothermal, engineeringeological etc.) in different scale – 1:500.000 - 1:10.000

-Mineral Resources of the Republic of Srpska – Monograph (last update in 2012) and Inventory (last update in 2015)

-Landslide database – more than 1500 landslide (last update 2015)

-Geothermal Atlas of RS (2012)

each financed from the Government

-Landslide Susceptibility Map (2015) and Groundwater Vulnerability Map (2014)

partly financed from UNDP and EU funds



Past projects experience - International projects



Landslide Knowledge Exchange

Through the Regional Cooperation in the Adriatic-Balkan Region



Together for the Mediterranean Sea





Existing in situ data in the Survey

- Metallic, non-metallic and energy mineral resources: location, types, quantity, quality-laboratory tests, data on exploitations, etc.
 - Groundwater: groundwater levels, spring yields (fresh, thermal, mineral), boreholes yield (drinking, thermal, mineral), hydrochemical data (physic-chemical, gases, isotopes), groundwater consumption;
 - Geothermal boreholes: geothermal gradient, heat flow, water temperature, well yield;
 - Landslides: location, area, depth, geomechanical properties of soil and rocks, rarely data on landslide monitoring;
 - Borehole database
- etc.



Possible stakeholders in your country – National Authorities

The Government of the RS

Ministries

- MoAFW
- MoSP&C
- MoIEM

Government organisations

- Water Agency
- Geological Survey
- Hydrometeorological Institute
- Institute for Agriculture

Other

- Power utility company
- Mines in national ownership
- Ecofond
- Universities
- Spas
- etc

>90%
data from
the
Project
Interest



Possible stakeholders in your country – Private Companies

Private Companies

Mining



Fe



Bx



Pb, Zn

Mining



Coal



Coal

Exploration and exploitation of non-metallic mineral resources - numerous private companies

Energy



TPP

HPP up to 5 MW
(about 10 companies)

Geothermal





Relevant legislations and IPR issues, convergence with internationally used codes

- Law on Geology (Official Gazette of RS 113/10) and appropriate Rules based on the Law. Determine the conditions for geological data responsibility and availability (data in government ownership);
- Law on Water (Official Gazette of RS 50/06) fully harmonised with EU WFD.
- Data exchange between the government bodies is free.
- No Law regulate strictly IPR on the entity level. Intellectual property is treated in different Laws.
- On B&H level Institute for Intellectual Property is established.
- No experience with the Institute competence.



Any existing templates of questionnaires

No

Thank You For Attention