



Access to Copernicus Data

Overview and Introduction



Copernicus

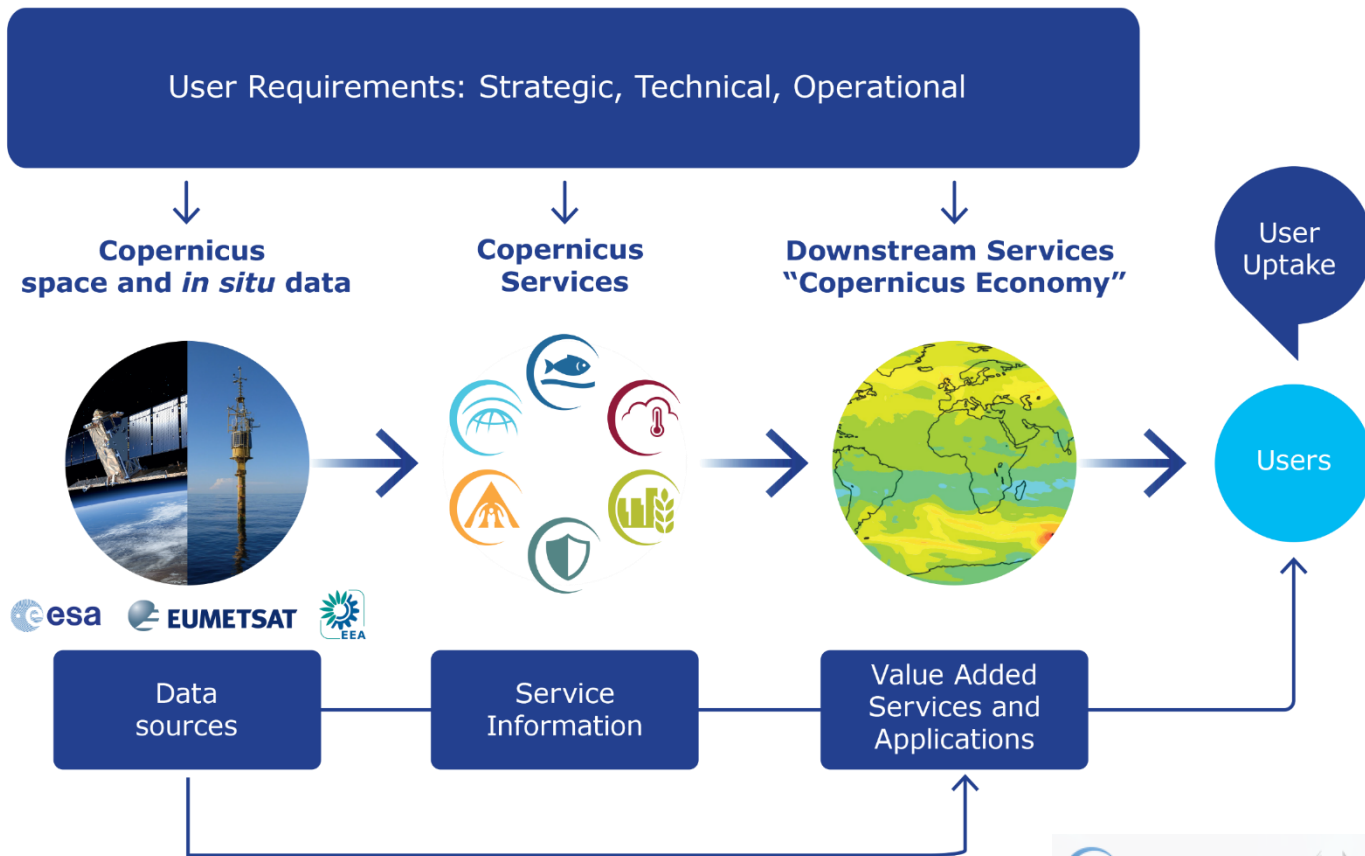
C O P E R N I C U S I N B R I E F

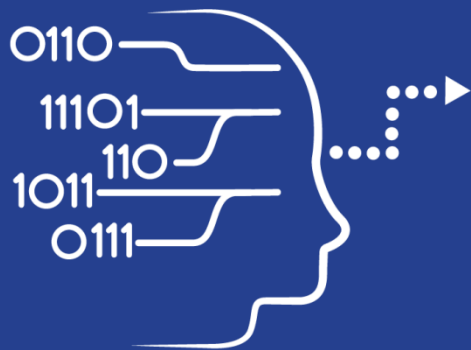
- **Copernicus, a flagship programme** of the European Union:
 - Monitors **the Earth**, its environment and ecosystems
 - Prepares for **crises, security risks** and **natural or man-made disasters**
 - Contributes to the **EU's role as a global soft power**
- Adopts a **full, free and open data policy**
- Is a tool for **economic development** and a driver for the **digital economy**



Copernicus

COPERNICUS IS DRIVEN BY THE USERS





User Uptake

Copernicus Data Access

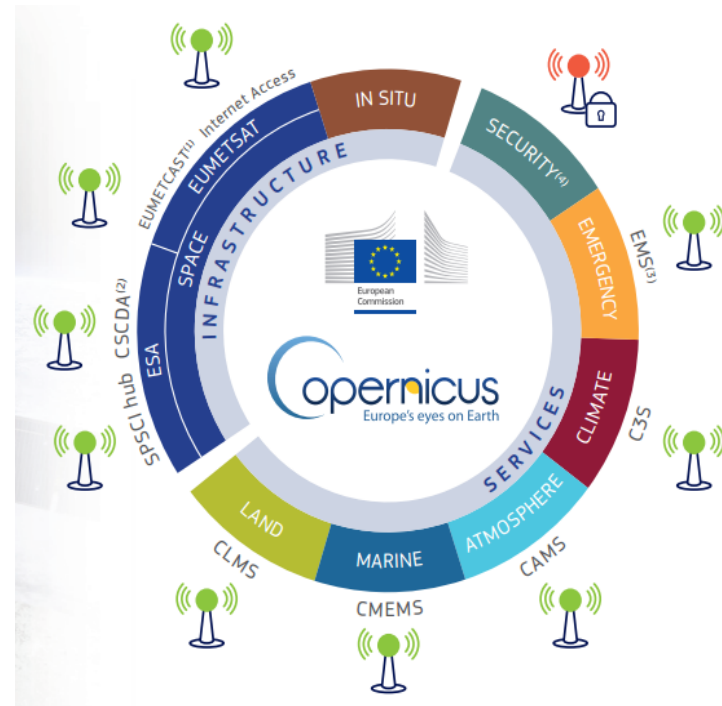
- 10 European Access points
- Several national and private initiatives



Data
Access

Copernicus Data Access Overview

- 10 European Data Access points:
 - 4 for Satellite Data
 - 6 for Services Data and Information
- Satellite data =
 - Access to images in NRT
 - Access to archives
- Services Data and Information=
 - Added value products, indicators
 - Models
 - Archives, Near Real Time and Forecasts products





- 4 data access points:
- 2 managed by ESA:
 - Scientific Data Hub (SCI Hub)
 - Copernicus Space Component Data Access (CSCDA)
- 2 managed by EUMETSAT
 - EUMETCast
 - Copernicus Online Data Access (CODA)





Space
Component

SENTINEL SCIENTIFIC DATA ACCESS



FULL, FREE AND
OPEN

Search & Browse



- Sentinel data
- Graphical user interface

Discover & Visualise



- Visualise/analyse data
- Access info

Register



- Order
- Customise
- Helpdesk

Download



- Select and download
- One-off or by scripts

Compute



- Use data
- Integrate
- Merge

Join Up



- Get trained
- Get inspired
- Meet partners

Where

<https://scihub.copernicus.eu>



How

Two kinds of user interfaces:

- Graphic User Interface
- Application Programming Interfaces (API)

Two API Options:

- Open Data Protocol
- Open Search

Key Figures

15,243

users successfully
registered
in 2015

355,939

products
published

502 Tbytes

published

1,050

average number
of products
published per
day

6,900

average number
of products down-
loaded per
day

Each user

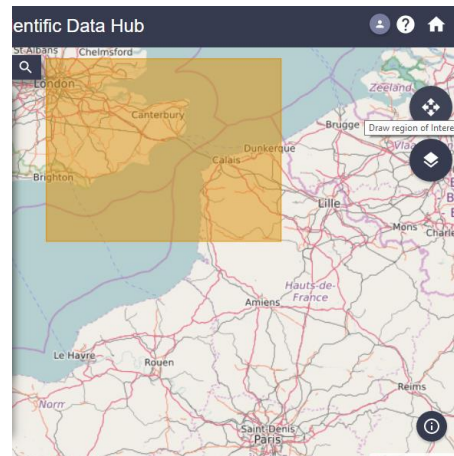
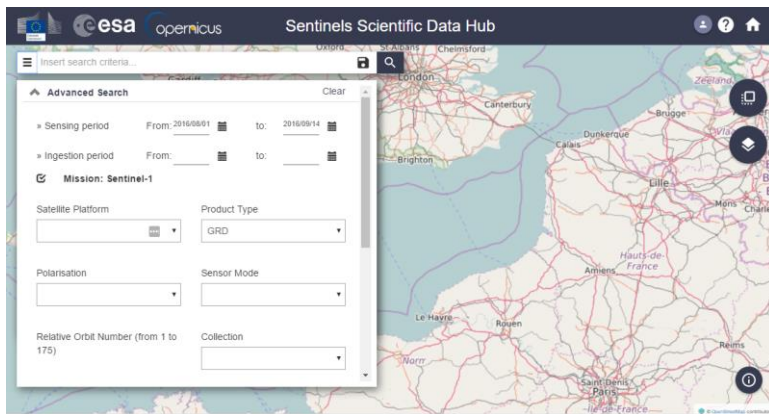
2 concurrent
downloads max and
500 Mbit/s



SCI-HUB IN PRACTICE (EXAMPLE)

On <https://scihub.copernicus.eu/dhus/#/home>:

- Draw region of interest
- Click on the Menu button to the left. A popup opens where you can fill out your search parameters, and select the mission you need.
- Click the Search icon.





Space
Component

SPACE COMPONENT DATA ACCESS (CSCDA)



RESTRICTED

Search & Browse



- HR/VHR images from 3rd Parties
- Global SAR coverage

Discover & Visualise



- Visualise/analyse data
- Access info

Register



- Order
- Customise
- Helpdesk

Download



- Select and download
- One-off or by scripts

Compute



- Use data
- Integrate
- Merge

Join Up



- Get trained
- Get inspired
- Meet partners

Where

Registration with
eosupport@Copernicus.esa.int



Access for Collaborative
Ground Segment

How

- Access restrictions: **EU Public authorities and institutions, EU Research projects, Copernicus Services**
- <https://spacedata.copernicus.eu/web/cscda/copernicus-users/access-rights>
- Order quota (for R&D and Copernicus services only)

Key Figures

**Worldwide
SAR coverage**
in High Resolution
(20m)

**24/7 satellite
availability**
for emergencies

**High
Resolution
(10-20m)**
of 39 European
States

**Very High
Resolution
(1-4m)**
of 39 European
States

Space
Com

FULL, FREE AND OPEN
But you must
get the station
and pay a
yearly fee

Discover & Visualise



- EUMETCast satellite service, EUMETCast Terrestrial
- Operational NRT data covering: Atmosphere, ocean, weather, land, climate
- More than 380 products

Get the Station



- One-stop-shop access service
- Standard PC
- DVB/DVB-S2 reception device
- EUMETCast client S/W and Key Unit (EKU)

Register



- View and edit profile
- Subscribe to services
- Register for notifications

Use Data



- Enhance operational environmental monitoring
- Sound decision making in several critical areas

Join Up



- 4500 stations globally
- Get trained inspired
- Meet partners

Where	How	Other info
<ul style="list-style-type: none"> • All data listed on the EUMETSAT Product Navigator. • Register on EUMETSAT EO Portal (EOP) 	<ul style="list-style-type: none"> • Get the station , configure and receive stream of data • Client S/W and EKU installed on your PC decrypt/decode incoming data stream 	<ul style="list-style-type: none"> • Open data policy depending on the data. • Frequent user trainings organised by EUMETSAT



Space
Component







FULL, FREE AND
OPEN

- Brand new Copernicus Access Point
- No need for satellite dishes
- All Sentinel-3 marine and atmosphere products through a rolling buffer which at its maximum will span up to 12 months worth of data.
- 2 access modes:
 - The ftp provides access to a fixed set of global and regional marine and atmosphere data.
 - The user interface allows users to select their own area of interest from the global products.
- Work in Progress (URL to come next month)



Data
Access

Access to Services Data and Information

- 6 Thematic Copernicus Services:
- 5 are under Full, free and open access:
 - Land (CLMS) 
 - Marine (CMEMS) 
 - Atmosphere (CAMS) 
 - Climate (C3S) 
 - Emergency (EMS) 
- 1 has restricted access:
 - Security 





Data
Access

COPERNICUS SERVICES

*Monitoring the State of the
Earth System Environment ...*



*... Six cross-cutting
Thematic Services*

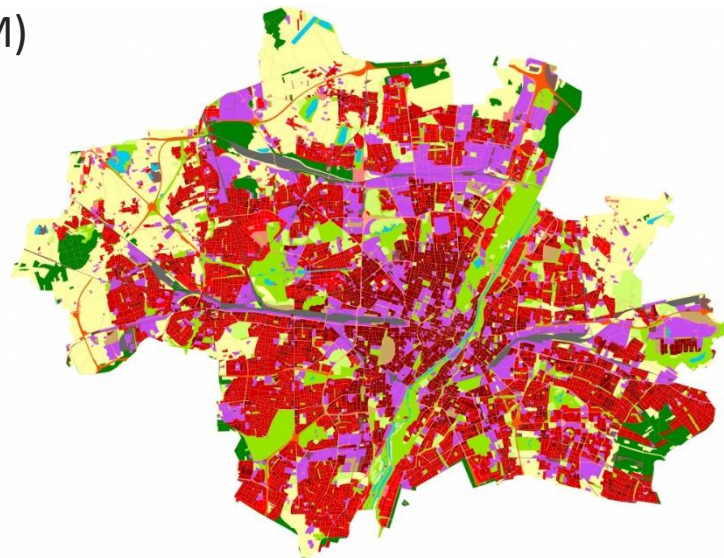


Land
Monitoring

FULL, FREE AND
OPEN

ACCESS TO CLMS

- What type of product is available ?
 - Land Use / Land Cover (CORINE)
 - Hydrology
 - Digital Elevation Model (DEM)
 - Urban Atlas
 - Natura 2000,
 - etc...





Land
Monitoring

ACCESS TO CLMS

FULL, FREE AND
OPEN

BIO-GEOPHYSICAL PRODUCTS:
VEGETATION, WATER, ENERGY

LU/LC & LU/LC CHANGE, FORESTS,
GRASSLANDS, WETLANDS, WATER BODIES

URBAN ATLAS, NATURA 2000

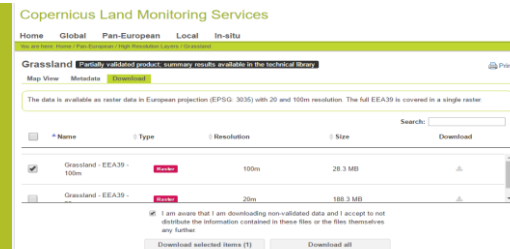
Global <http://land.copernicus.vgt.vito.be/PDF/portal/Application.html#Home>

- Register or log in
- Select portal with desired parameters
- Indicate time frame and area of interest
- Download the selected result



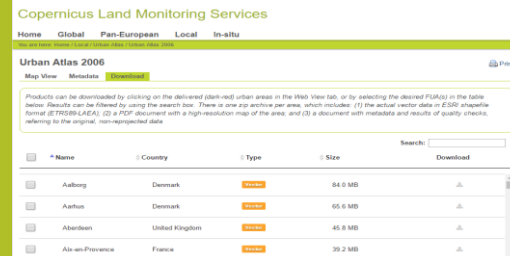
Pan-European <http://land.copernicus.eu/pan-european>

- Select the desired portal
- Switch to Download tab
- Select the desired dataset
- Agree and download the selected result



Local <http://land.copernicus.eu/local>

- Select the desired portal
- Switch to Download tab
- Select the desired dataset
- Agree and download the selected result





- What type of product is available ?
 - 140 products
 - Key physical and biogeochemical ocean parameters (currents, temperature, chlorophyll ...)
 - Global ocean and 6 European regional seas
 - Analysis, forecast and long time series
 - Models and observations (Satellite or in situ)

FULL, FREE AND
OPEN

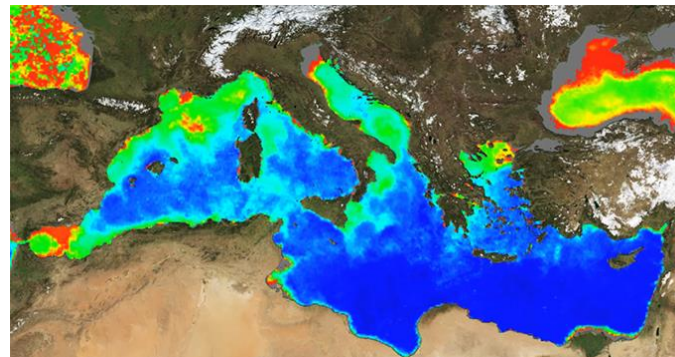
CMEMS products support **Marine Safety**, any safe activities at sea

CMEMS products support **Marine Resources**, protection and the sustainable management of living marine resources

CMEMS products support **Coastal areas**, water quality, pollution control, regional ecosystem management, predict coastal temperature and physical impacts and marine resources

CMEMS products support the **EU and national Meteo services**, as physical parameters of the ocean's surface are used in atmospheric models, and changes in sea ice extent, concentration and volume are signals to detect global warming for instance

will be added





Marine
Monitoring

FULL, FREE AND
OPEN

ACCESS TO CMEMS

<http://marine.copernicus.eu/>

- Register or log in
- Select a sea or ocean



- Select additional parameters
- Press “Add to Cart” under the desired dataset



View or Download the dataset





Atmosphere
Monitoring

FULL, FREE AND
OPEN

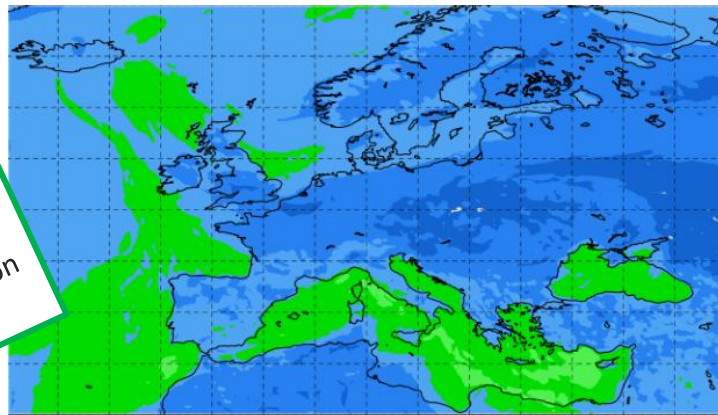
ACCESS TO CAMS

- CAMS provide information on air quality and on the atmosphere composition.
- CAMS answers the following questions:
 - What will the air we breathe be like tomorrow?
 - Where are the best places for my solar farm? What is the yield I can expect?

CAMS products support the Air Quality Comprehensive Global Monitoring and Assessment (AQM) project. CAMS products **monitor the global** CO₂ and CH₄ concentrations, and provide forecasts of stratospheric ozone depletion.

CAMS products provide **Global and direct irradiances** for Europe, Africa, the Middle East and Asia providing the solar energy industry, the electricity and renewable energy sectors with accurate radiation data.

CAMS products **compiles emission inventories**, estimates net fluxes of CO₂, N₂O and CH₄ at the Earth's surface, estimates emissions of aerosols, chemical species, and greenhouse gases from wild fires on a daily basis.





ACCESS TO CAMS

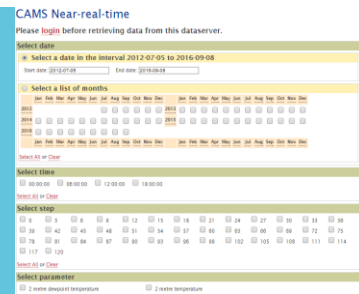
Atmosphere
Monitoring

FULL, FREE AND
OPEN

<http://atmosphere.copernicus.eu/>
Catalogue → Enter

Select parameters.
Click Data Download.

Log in to ECMWF server.
Select parameters and time frame.
Download result.



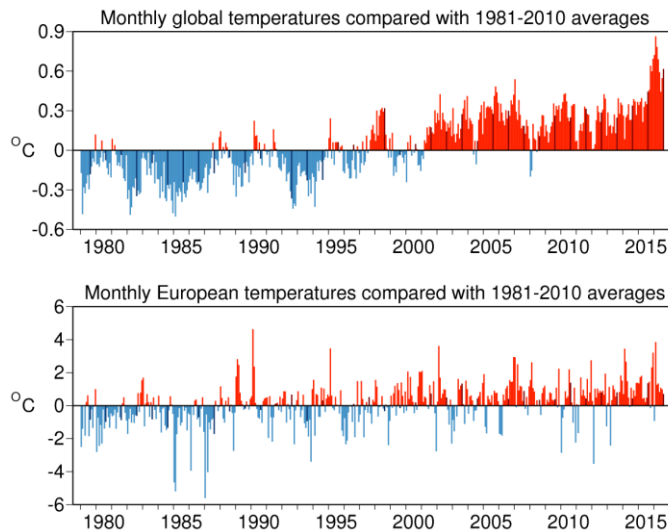


Climate
Change

FULL, FREE AND
OPEN

ACCESS TO C3S

- C3S= Copernicus Climate Change Service
- Under construction with Sectoral Information System (Insurance, Water, Energy, etc.) and specific portals and indicators
- Some datasets already available.



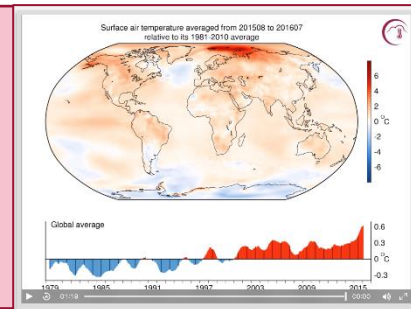


Climate
Change

FULL, FREE AND
OPEN

ACCESS TO C3S

- Visit <https://climate.copernicus.eu> and select data of interest
- Can access data via C3S or on ECMWF website at <http://apps.ecmwf.int/datasets/data/interim-full-daily/>



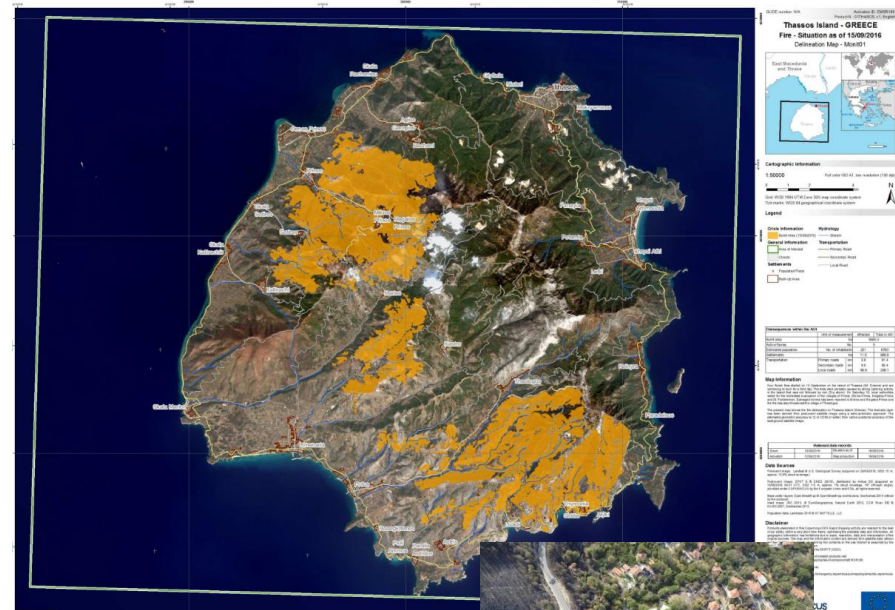
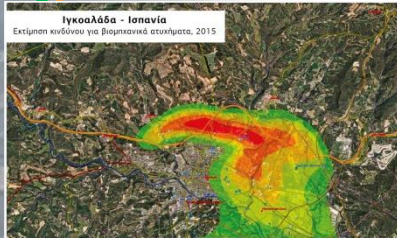
- To access the **ECMWF public datasets**. You will **need to have an account** on ECMWF web site
- If you **don't have an account**, please self register at <https://apps.ecmwf.int/registration/>
- Very **simple**: the user writes a request, submits it and retrieves a file





- EMS answers to :
 - floods,
 - tsunami,
 - earthquake,
 - landslides,
 - fires,
 - severe storms,
 - humanitarian crisis,
 - volcanic eruptions,
 - technological disaster

Only authorized users can trigger the service
But everybody can access maps!





EMS Registration process

- Emergency Management Service:
<http://emergency.copernicus.eu/>
- Implemented by EC
- Data Policy: Depend on profile
- **Authorised Users** may trigger the service: National Focal Points (NFPs) in EU Member States and in countries participating in the European Civil Protection Mechanism as well as EC Services (DGs) and the Situation Room of the EEAS.
- **Associated Users** must coordinate with and go through the Authorised Users in order to trigger the service. Associated Users include local, regional and other public entities; International Governmental Organisations (e.g. UN agencies, World Bank), and National & International Non-Governmental Organisations; entities and institutions within the EEAS sphere such as EU Delegations, the INTCEN, the EU Satellite Centre.
- **General Public Users** are not authorised to trigger the service, but can be informed of an activation request through the web portal. Activations, for which sensitivity restrictions apply, are excluded.





FREE AND OPEN

<http://emergency.copernicus.eu/>

- Under Rapid Mapping, click on List of Activations
- Search by Activation Status, Event Type, Date or Country
- Click on the event of interest.
- Download the available maps.

- Under Risk and Recovery, click on List of Activations
- Search by Activation Status, Event Type, Date or Country
- Click on the event of interest
- Download the available maps

COPERNICUS
Emergency Management Service

Home | What is Copernicus | EMS - Mapping | EMS - Early Warning System | News

Latest News - 2016-09-12 | [EMSR180] Fires on Thassos Island

EMS - RAPID MAPPING

- Service Overview
- Who can use the service
- How to use the service
- Products: Rapid Mapping
- Products: Risk and Recovery
- Quality control / Feedback
- New place in brief
- User Guide

RAPID MAPPING

- List of Activations
- Map of Activations
- GeoRSS Feed

RISK AND RECOVERY

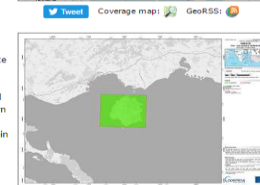
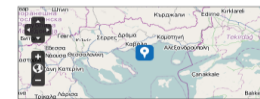
- List of Activations

List of EMS Rapid Mapping Activations

Act. Code	Title	Event Date	Type	Country	Feed
EMSR180	Fires on Thassos Island	2016-09-10	Forest fire, wild fire	Greece	
EMSR177	Earthquake in Central Italy	2016-08-24	Earthquake	Italy	
EMSR176	Flood in Louisiana	2016-08-12	Flood	United States	
EMSR175	Forest Fire in Madeira Island	2016-08-08	Forest fire, wild fire	Portugal	
EMSR174	Flood in Skopje	2016-08-07	Flood	Macedonia	
EMSR173	Forest Fire in La Palma Island	2016-08-03	Forest fire, wild fire	Spain	
EMSR172	Seismic activity in Breve Island	2016-08-01	Earthquake	Cape Verde	
EMSR171	Forest Fires in Sardinia	2016-07-04	Forest fire, wild fire	Italy	

EMSR180: Fires on Thassos Island

Event Time (UTC): 2016-09-10 07:00
Event Time (LOC): 2016-09-10 10:00
Event Type: Forest fire, wild fire
Activation Time (UTC): 2016-09-12 14:36
Reference maps produced: 0
Delineation maps produced: 3
Grading maps produced: 0
Activation Status: Open
Affected Countries:
 Hellenic Republic
Area Descriptor: Island of Thassos, Greece
Authorized User:
 Greece (General secretariat for Civil protection - Directorate for Emergency Planning and Response)
Activation Reason:
 On Saturday 10-09-2016 morning, four fires that started on the island of Thassos (NE Greece) and continue to burn for a third day. The fires were probably caused by strong lightning activity in the island that was not followed by rain (Dry storm). Villages have been evacuated.
Requested Product: Delineation and monitoring



EMSR180 - Activation Extent Map
 Release: 031 - Version: v3 - Delivered: 2016-09-14 09:06
 View as: EMSR180-AEH-3PG • EMSR180-AEH-KMZ • EMSR180-AEH

Filter by map type: ALL • DELINEATION



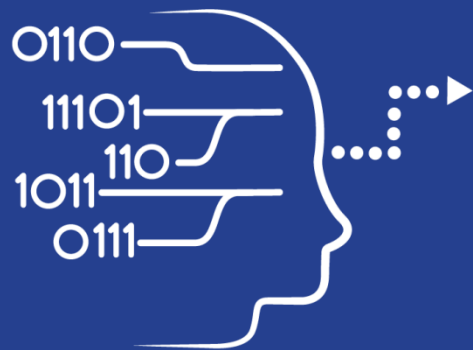
Security

Access to Security Service

The Copernicus service for Security applications aims to support European Union policies by providing information in response to Europe's security challenges. It improves crisis prevention, preparedness and response in three key areas:

- Border surveillance;
- Maritime surveillance;
- Support to EU External Action.

Its access is strictly restricted to authorised users.



User Uptake

Copernicus Access to Data

National and private Initiatives



Data
Access

OTHER DATA ACCESS PUBLIC INITIATIVES

National Initiatives- Collaborative Ground Segment

Initiative Name	Initiative Leader	Website and Target User Group
THEIA Land Data Centre	CEA, Cerema, IRSTEA, IRD, CNRS, INRA, IGN, Meteo France, CIRAD, ONERA	<ul style="list-style-type: none">• URL: theia-land.fr• Scientific communities and public authorities
NOA Hellenic National Sentinel Data Mirror Site	NOA, IAASARS	<ul style="list-style-type: none">• URL: sentinels.space.noa.gr• Scientific communities, public authorities, private industry players
CATAPULT Satellite Applications and CEDA	UK Space Agency	<ul style="list-style-type: none">• URL: sa.catapult.org.uk• Scientific communities, public authorities, private industry players
ESA Thematic Exploitation Platforms	ESA	<ul style="list-style-type: none">• URL: tep.eo.esa.int• All user types
Platform for Exploiting Products from Sentinels (PEPS1)	CNES	<ul style="list-style-type: none">• URL: peps.cnes.fr• Scientific communities and public authorities



Data
Access

OTHER DATA ACCESS PRIVATE INITIATIVES

Private Initiatives

Initiative Name	Initiative Leader	Website and Target User Group
CLOUDEO	CloudEO	<ul style="list-style-type: none">• URL: cloudeo-ag.com• Users and developers of geo services, providers of geo data, services, applications and tools
Earth Observation Data Centre (EODC) for water resources monitoring	Vienna University of Technology Department of Geodesy and Geo-info	<ul style="list-style-type: none">• URL: eodc.eu• Regional public authorities and private users
GEOPEdia platform	Sinergise	<ul style="list-style-type: none">• URL: geopedia.world• National, regional public authorities and private users
GEOSTORM platform	CS-SI	<ul style="list-style-type: none">• URL: geostorm.eu• Regional authorities and private users
Sentinel-2 on AWS	Amazon	<ul style="list-style-type: none">• URL: sentinel-pds.s3-website.eu-central-1.amazonaws.com• Developers, private/public downstream players
Google Earth Engine	Google	<ul style="list-style-type: none">• URL: earthengine.google.com• Regional authorities and private users



Data
Access

Perspectives

- Imminent launch of a **Data Access and Information Service**
- Intention to procure parallel services from three suppliers:
 - **3 platforms** to provide equal access to the basic data and services
 - **Run by 2 entrusted entities:** EUMETSAT (1 platform) and ESA (2 platforms)
- Overall **ensuring that Copernicus data is easily accessible and used!**

