

ورشة عمل عن:  
التسيق والتكامل في أنشطة رصد الأرض الحديثة وربطها

Supporting The Industry by:  
**Daily Imaging Capabilities Using**  
planet. satellite constellation



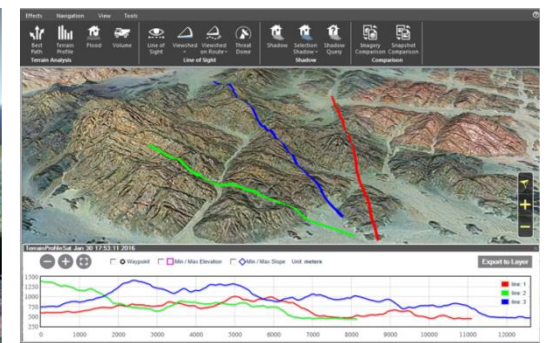
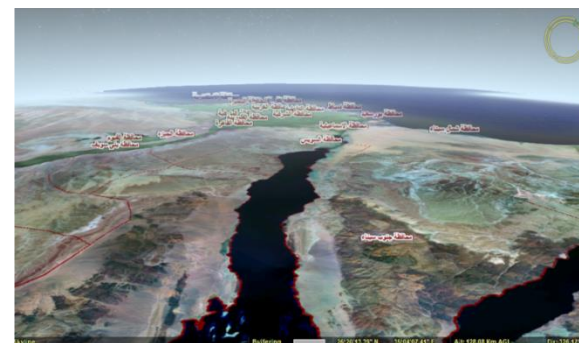
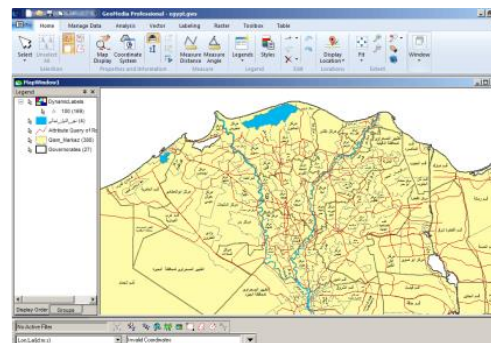
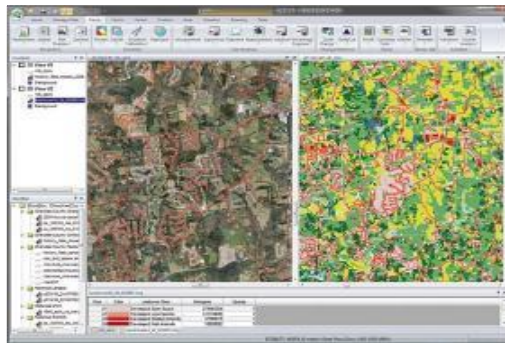
**Center for Environment and Development  
for the Arab Region and Europe**



**Mohamed Omar**  
*Executive Vice President*  
Remote Sensing & GIS Consultant

## EDGE PRO

- Joint Stock company
- Founded in 2004
- Qualified staff with more than 20 years of experience
- **Main industry:**
  - Satellite Imagery Provider
  - Remote Sensing
  - Geographical Information Systems
  - Photogrammetry
  - 3D Modelling & Virtual Reality



Supporting The Industry by:  
**Daily Imaging Capabilities Using**  
planet. satellite constellation

( **Mission / Configuration** )



## Mission Statement:

To image the **whole world**, **every day**, making changes **visible**, **accessible** and **actionable**.

- Founded in 2010
- 400 employees
- 3 x Offices: San Francisco, Berlin and Amsterdam
- Launched >230 satellites
- Largest constellation of earth-observation satellites ever
- Daily imaging capacity > 140 million square kilometres





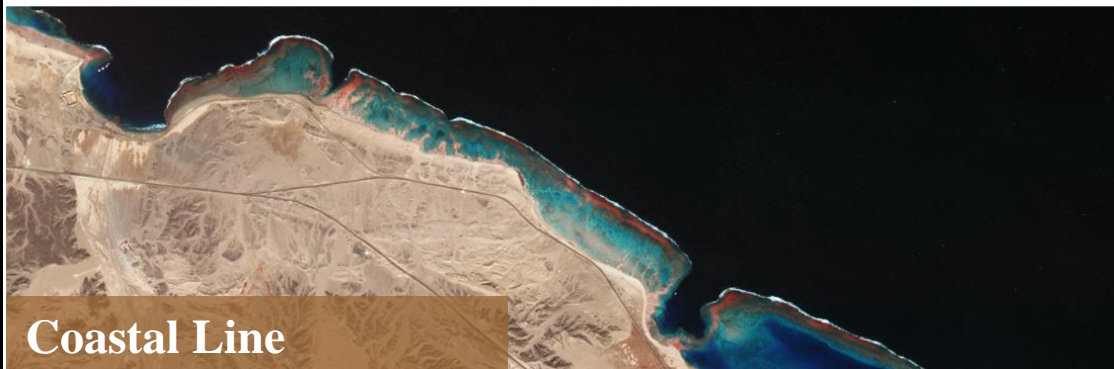
# Operational Capacity

Constellation	Specifications
Orbital Altitude	475km
Spectral Ranges	RGB + Near-Infrared
Spatial Resolution	3.125m GSD
Positional Accuracy	<10m RMS
Data Availability	<24h after collection via always-on service





**Utilizing from daily imaging of whole country**



**Coastal Line**



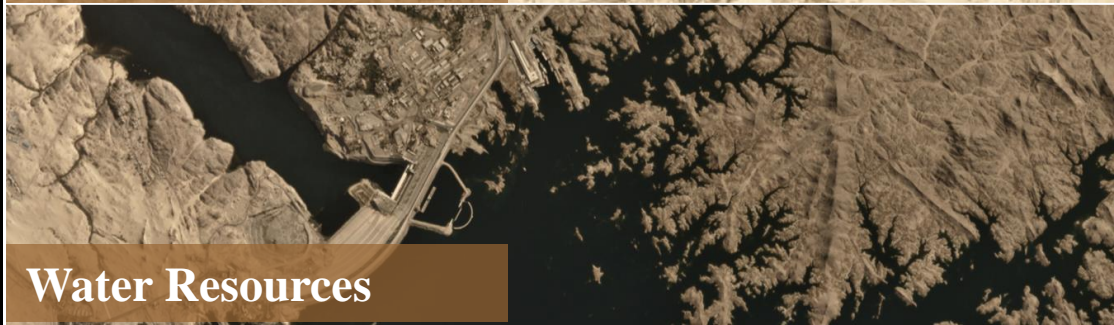
**Emerging Incidents**



**Urban infrastructure**



**Maritime Traffic**



**Water Resources**



**Natural resources**



Monitor Critical infrastructure



New Capital Power Station

Estimate economic values of ports



Safaga Port, Red Sea



Follow up ports new logistic services

متابعة التطور في ميناء العين السخنة

28 Feb. 2014



Sokhna Port





planet.

How much work is done ! ( **The New Capital** )



Monitor expansion in **Housing** services

Measuring rates of **Roads** construction



Progress in **Earth work** in the site



Ex: ( ~ 3 Km two lanes) added in last 2 months



Supporting The Industry by:  
**Daily Imaging Capabilities Using**  
planet. satellite constellation

( **Nature / Challenges** )



### Nature of Daily Imaging the earth?

Imagine a continuous (Yesterday, today & tomorrow) images feed that needs to be managed by specialists to study your multiple regions of interest (ROI).

### Challenges !!!:

- **Downloading** lot of imagery series for each ROI
- Accumulating **hundreds of GB** data storage
- **Looking back** for a specific date for a certain ROI
- Preparing and **processing this increasing volume** of imagery data
- **Inspections & analyzing** imagery series to reach the whole study
- Delivering results in **Decision Support language/format**



### Observ ?

Is a cloud/on premises service that provided based on daily earth imaging capabilities, downloaded, processed and managed by EDGE-PRO technical team with high quality added-values.

### Observ is a fully automated Services:

- Automatic downloading imagery for your region of interest
- Automatic data preparing / processing
- Automatic spatially analyzing
- Automatic extracting of added values in Vector/DB format for rapid decision making.

 **Observ** Agriculture

 **Observ** Encroachments

 **Observ** Environment

 **Observ** Disasters



## How EDGE-PRO managed the challenges ?:

### Downloading issues

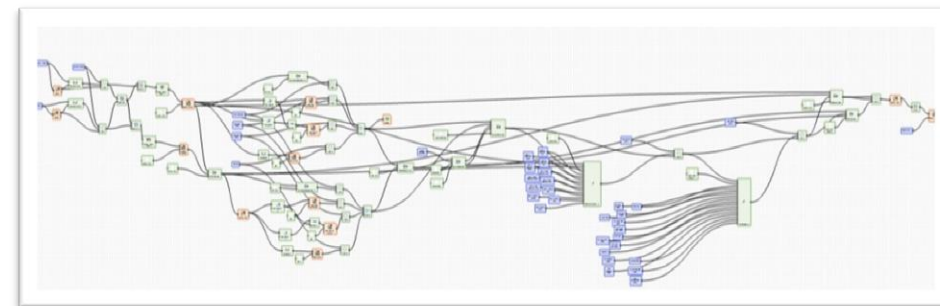
- Define your ROIs, configure dates (from/to), let the system do the rest forever

### Big-data handling issues:

- Big-data Compression techniques, Archiving/Indexing and rapid Retrieval of imagery series based on (name, date, metadata, analyzed data, ROI, ...)

### Imagery Analysis issues:

- Data investigations, spatial analysis with spectral object signatures is done in parallel automated processes



### Delivering output issues:

- Imagery processing, extracting added-values information in (OGC standard) spatial Databases, that could be joined directly with real-time decision support monitoring systems



## Samples of Automated Workflows:

### Downloading issues

- Define ROIs, configure (from date), download directory, let the system do the rest forever





### Imagery Analysis & Output Delivery:

- Parallel automated processes for data spatial analysis
- Extracting added-values information in (OGC standard) spatial Databases

The screenshot displays a software interface with a map on the left and a console window on the right. The console window shows the following log entries:

```
Running Script : Domestic Port Ship Detection
Error : 2017-05-10 09:48:55,919 - planet.api.dispatch - INFO - GET https://api.planet.com/data/v1/download/fo
Error : 2017-05-10 09:48:56,697 - root - INFO - (downloading: 1, paging: False, activating: 0, complete: 0, pe
Error : 2017-05-10 09:48:57,698 - root - INFO - (downloading: 1, paging: False, activating: 0, complete: 0, pe
Error : 2017-05-10 09:48:58,699 - root - INFO - (downloading: 1, paging: False, activating: 0, complete: 0, pe
Error : 2017-05-10 09:48:59,700 - root - INFO - (downloading: 1, paging: False, activating: 0, complete: 0, pe
Error : 2017-05-10 09:49:00,700 - root - INFO - (downloading: 1, paging: False, activating: 0, complete: 0, pe
Error : 2017-05-10 09:49:01,700 - root - INFO - (downloading: 1, paging: False, activating: 0, complete: 0, pe
Error : 2017-05-10 09:49:02,701 - root - INFO - (downloading: 1, paging: False, activating: 0, complete: 0, pe
Error : 2017-05-10 09:49:03,701 - root - INFO - (downloading: 1, paging: False, activating: 0, complete: 0, pe
Error : 2017-05-10 09:49:04,702 - root - INFO - (downloading: 1, paging: False, activating: 0, complete: 0, pe
Error : 2017-05-10 09:49:05,702 - root - INFO - (downloading: 1, paging: False, activating: 0, complete: 0, pe
Error : 2017-05-10 09:49:06,703 - root - INFO - (downloading: 1, paging: False, activating: 0, complete: 0, pe
Error : 2017-05-10 09:49:07,703 - root - INFO - (downloading: 1, paging: False, activating: 0, complete: 0, pe
Error : 2017-05-10 09:49:08,704 - root - INFO - (downloading: 1, paging: False, activating: 0, complete: 0, pe
Error : 2017-05-10 09:49:09,704 - root - INFO - (downloading: 1, paging: False, activating: 0, complete: 0, pe
Error : 2017-05-10 09:49:10,704 - root - INFO - (downloading: 1, paging: False, activating: 0, complete: 0, pe
Error : 2017-05-10 09:49:11,704 - root - INFO - (downloading: 1, paging: False, activating: 0, complete: 0, pe
Error : 2017-05-10 09:49:12,704 - root - INFO - (downloading: 1, paging: False, activating: 0, complete: 0, pe
Error : 2017-05-10 09:49:13,704 - root - INFO - (downloading: 1, paging: False, activating: 0, complete: 0, pe
Error : 2017-05-10 09:49:14,705 - root - INFO - (downloading: 1, paging: False, activating: 0, complete: 0, pending: 0, downloaded
Error : 2017-05-10 09:49:15,705 - root - INFO - (downloading: 1, paging: False, activating: 0, complete: 0, pending: 0, downloaded
Error : 2017-05-10 09:49:16,705 - root - INFO - (downloading: 1, paging: False, activating: 0, complete: 0, pending: 0, downloaded
Error : 2017-05-10 09:49:17,705 - root - INFO - (downloading: 1, paging: False, activating: 0, complete: 0, pending: 0, downloaded
Error : 2017-05-10 09:49:18,705 - root - INFO - (downloading: 1, paging: False, activating: 0, complete: 0, pending: 0, downloaded
Error : 2017-05-10 09:49:19,706 - root - INFO - (downloading: 1, paging: False, activating: 0, complete: 0, pending: 0, downloaded
Error : 2017-05-10 09:49:20,706 - root - INFO - (downloading: 1, paging: False, activating: 0, complete: 0, pending: 0, downloaded
Error : 2017-05-10 09:49:21,707 - root - INFO - (downloading: 1, paging: False, activating: 0, complete: 0, pending: 0, downloaded
```

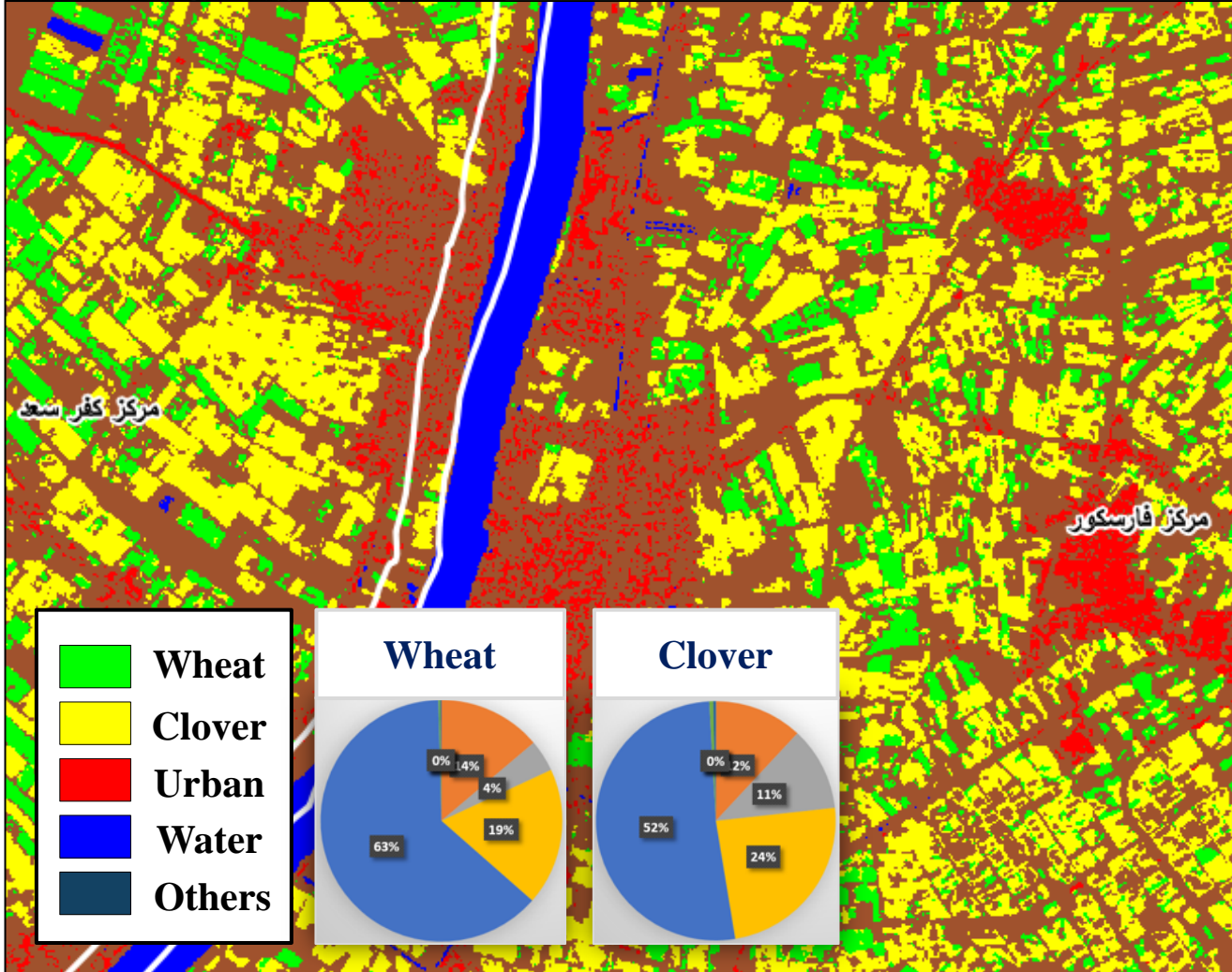
Supporting The Industry by:  
**Daily Imaging Capabilities Using**  
planet. satellite constellation

( **Industry samples** )

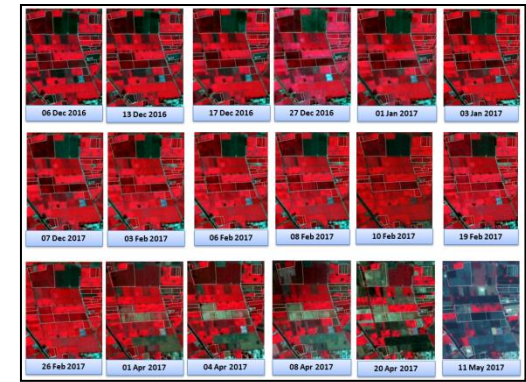
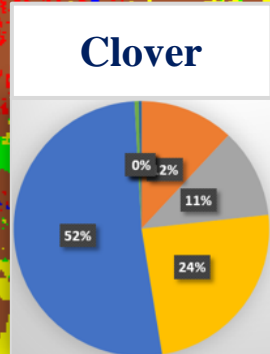
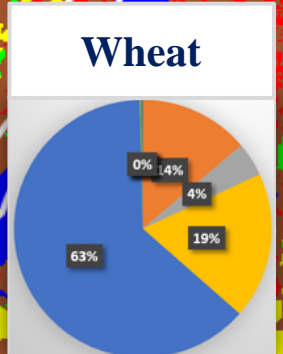




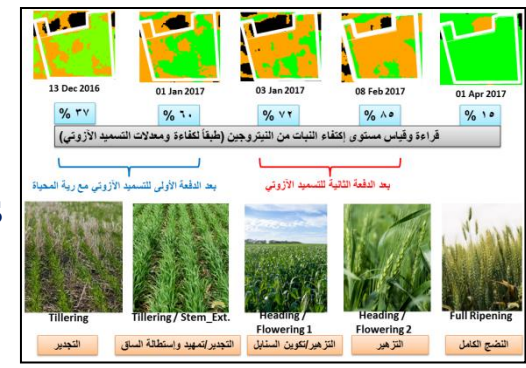
## Crop Types Map for Damietta Governorate in Egypt



- Wheat
- Clover
- Urban
- Water
- Others



Up to 30 images taken in winter season.



- Follow up:**
- Crop growth stages
  - Crop types
  - Crop health

### Monitoring vessels illegal activities:

- Extracting oil spill
- Calculating polluted areas
- Integrating imaging dates with vessel AIS-Information to identify causalities



**Incident date: 26 Mar. 2017**  
**No. of Vessels: 1**  
**Location: Damietta port**

**Hopper Dredger**

IMO: 9284180	Gross Tonnage: 11316
MMSI: 622123240	Deadweight: 17100 t
Call Sign: 6ACI	Length Overall x Breadth Extreme: 127.5m x 26m
Flag: Egypt [EG]	Year Built: 2004
AIS Vessel Type: Other	Status: Active

**Voyage Info** | **Companies at Destination**

<b>EG PSD</b> ATA: 2017-05-10 13:41 LT (UTC +2)	<b>EG SUZ</b> ETA: 2017-06-21 21:00 LT (UTC +2)
--	--

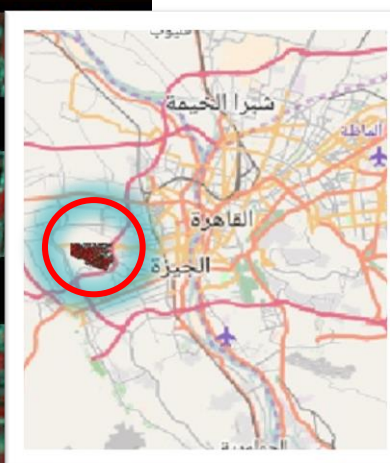
Distance to Go: 42 NM  
Time to Destination: 42d, 3h  
Draught: 9m



© Janj S. MarineTraffic.com



July 2016



 **Encroachments**

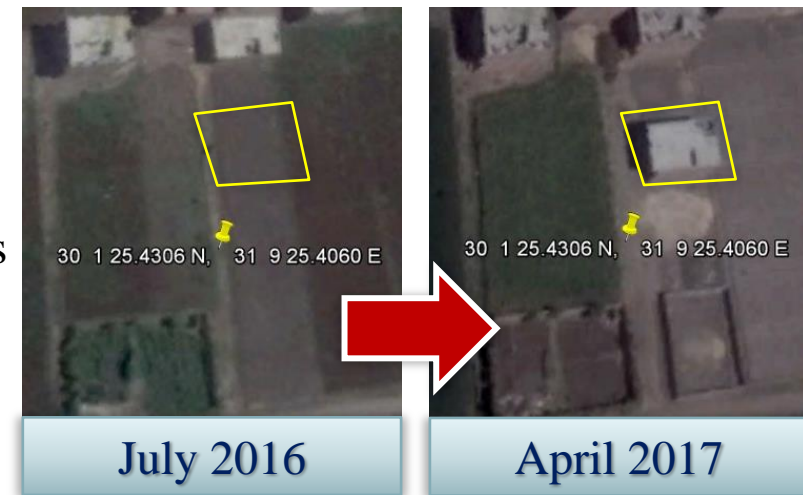


### Detect Encroachments in large area:

- 120 changes detected
- Smart Filtering of changes
- 80% output accuracy



April 2017



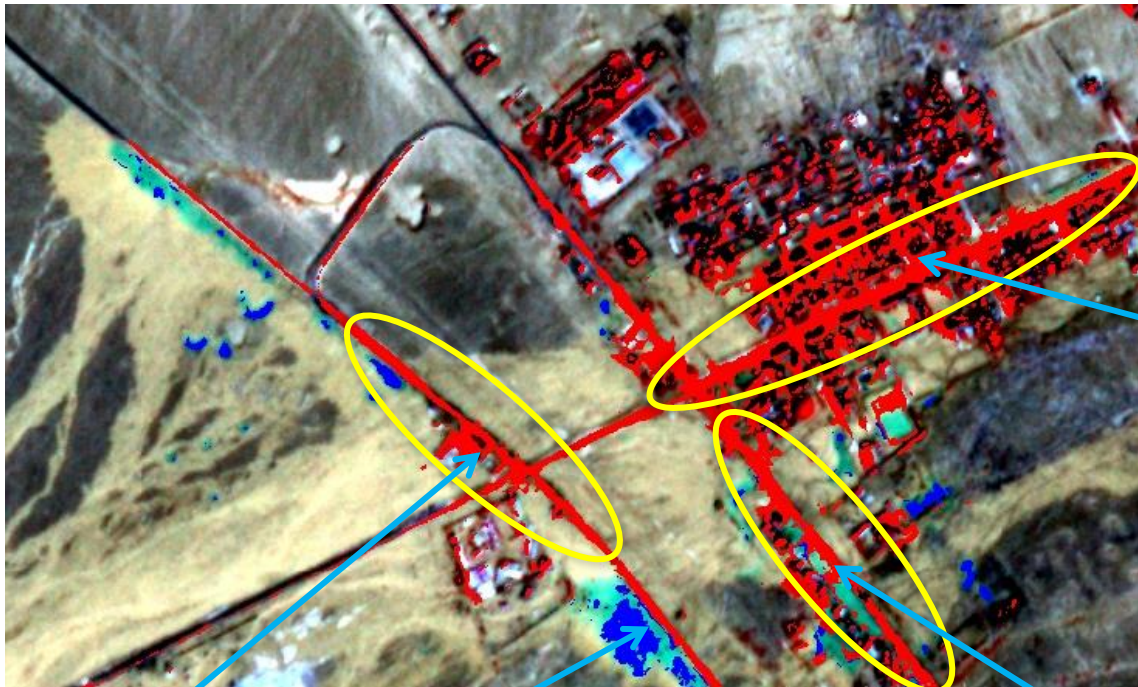
July 2016

April 2017

### Study Area:

- 3100 m x 2200 m





1

**Road damage status:**

**Ras Gharib / Hurghada Road (2)**

1670 m blocked

**Ras Gharib / El-Shiekh Fadl Road (1)**

2815 m blocked

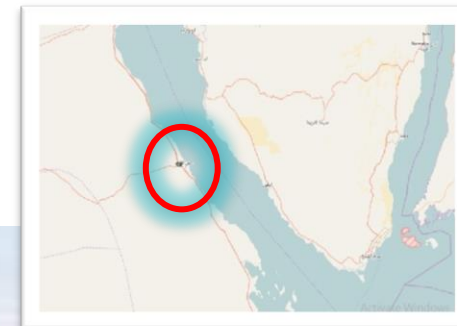
**Hurghada / Cairo Road (3)**

2480 m blocked

3

Accumulated water (1250 sq. m)

2



Imagery dates for Flood interval : 26 – 29 October 2016



# Thank you

