



National Observatory of Athens (NOA)

Dr. Haris KONTOTES

kontotes@noa.gr

Research Director & Coordinator of GEO-CRADLE

GEO-CRADLE started as a CSA project funded by the H2020 but today is a GEO Initiative after the decision taken in the last GEO Ministerial in Kyoto

Horizon 2020 Regional Seminar Addressing Euro-Mediterranean Common Challenges through Research and Innovation Cooperation, 22 January 2019, EuroMed University of Fes, Morocco



GEO-CRADLE

<http://geocradle.eu>

GEO-CRADLE coordinates and integrates state-of-the-art EO activities in the regions of **North Africa, Middle East, and Balkans** (NAMEBA) and develops links with GEO related initiatives towards GEOSS, contributing amongst others to EuroGEOSS and AfriGEOSS.



THE OVERARCHING GOAL

Develop and sustain updated the roadmap for the implementation of GEO, GEOSS, and Copernicus in regions

The **GEO-CRADLE** project has received funding from the European Union's **Horizon 2020** research and innovation programme under grant agreement No 690133





GEO-CRADLE

<http://geocradle.eu>



GEO-CRADLE

- ✓ Brings together key players representing the **entire EO value chain** (> 300 stakeholders) from 29 countries
- ✓ Promotes the **uptake and exploitation** of innovative **EO activities** in NAMEBA



The **GEO-CRADLE** project has received funding from the European Union's **Horizon 2020** research and innovation programme under grant agreement No 690133



The GEO-CRADLE addresses



Pilots
applicable
&
adaptable
to all
countries

Adaptation to
Climate
Change (ACC)



Improved
Food Security
– Water
Extremes
Management
(IFS-WEM)



Access to
Raw
Materials
(ARM)



Access to
Solar Energy
(SENSE)



End users &
stakeholders
engagement

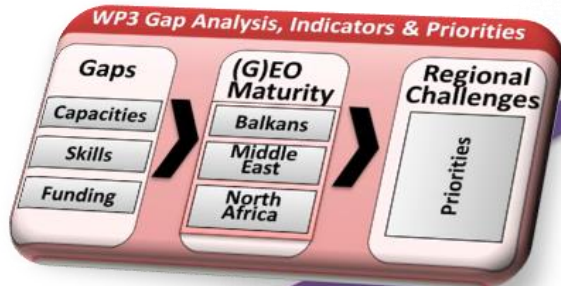
Through the support of

- ✓ Regional Cooperation
- ✓ Awareness raising
- ✓ Capacity building
- ✓ Training upon Open data accessing, sharing and exploitation

The Activities

Regional Data Hub with >25,000,000 datasets

11 countries analysed with the
“maturity indicators” methodology



Capacity building

Regional cooperation

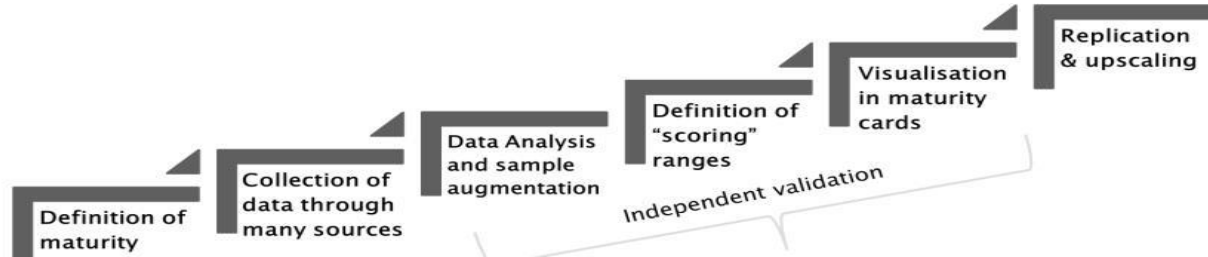
16 regional workshops

Networking Platform
with >300 stakeholders
from 29 countries



4 large scale regional actions relevant to
capacity building and delivery of innovative
services in support of 11 UN SDGs

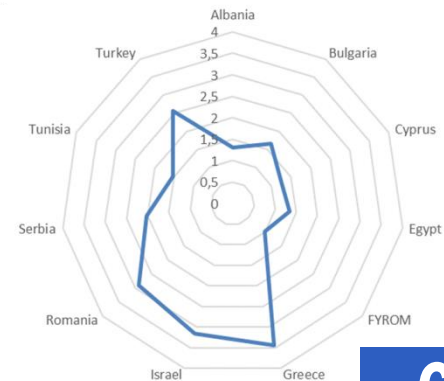
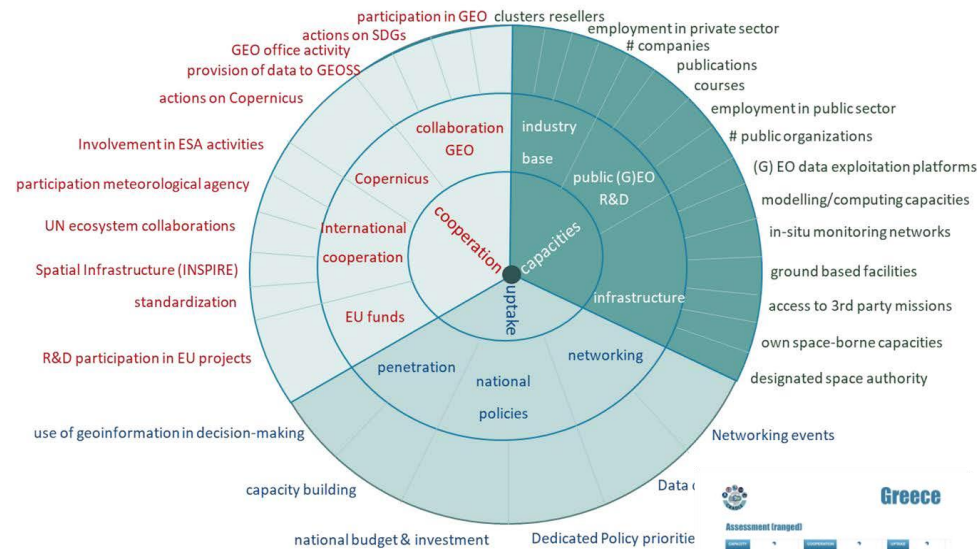
Results: Maturity Indicators Methodology & Assessment



Innovative, independent, up-to-date and replicable methodology for the assessment and monitoring of EO maturity at national level

A very extensive set of 32 indicators was defined across 3 main fields:

- 1. Capacities**
- 2. Cooperation**
- 3. National Uptake and Awareness**

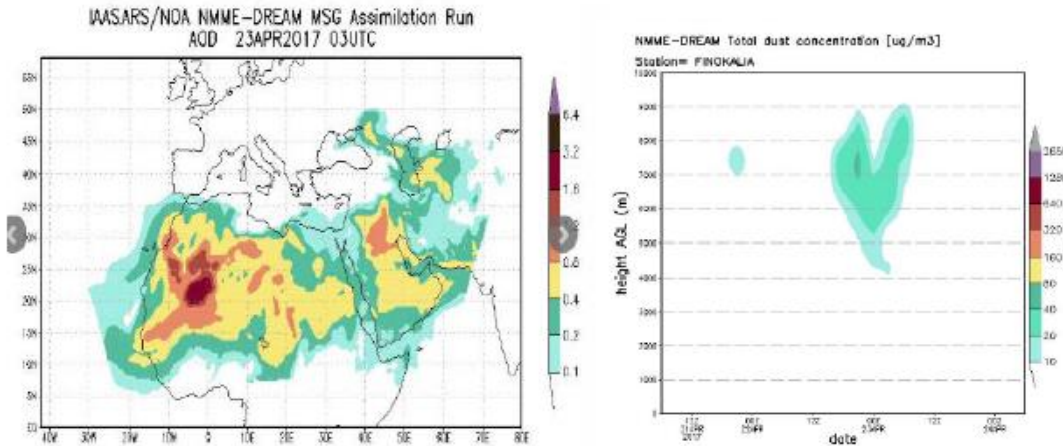


Application of the methodology in 11 countries of the BAMENA region:

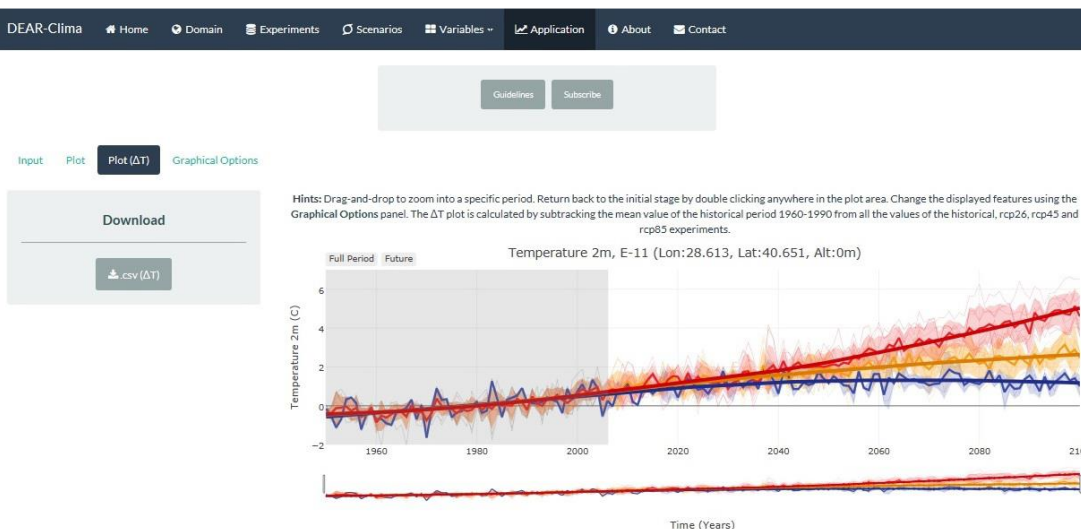
Albania, Bulgaria, Cyprus, Egypt, FYROM, Greece, Israel, Romania, Serbia, Tunisia, Turkey,

Results: Thematic 1 – Adaptation to Climate Change

Desert Dust services:



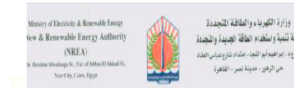
Regional Climate Change services:



Engagement of end-users:



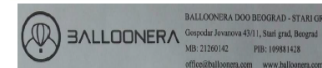
Office National de la Meteorologie - Algeria



Ministry of Electricity and Renewable Energy – Egypt



Institute for scientific research – Kuwait



Balloonera Company – Serbia



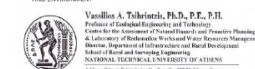
GEO-CRADLE SENSE pilot solea company for solar energy



University of Belgrade – Serbia



Department of Meteorology – Cyprus



National Technical University of Athens – Greece



Agence du Bassin Hydraulique du Sebu – Morocco

Results: Thematic 2 – Improved Food Security & Water Extremes Management

Regional Soil Spectral Library: 1754 soil samples from 9 countries (Albania, Bulgaria, Cyprus, Egypt, FYROM, Greece, Israel, Serbia, Turkey)

myDEWETRA platform:

Geocradle

Home Groups Datasets News

Log in

Regional Soil Spectral Library

Part of pilot 2 - Improved Food Security and Water Extremes Management

The importance of soils is ubiquitously recognized; they provide essential services such as food production, prevention of land degradation, water quality, and they act as carbon sinks. It has been thus recognized that a spatio-temporal monitoring of soil quality and soil properties is necessary. One of the most important technologies used to monitor soils is soil spectroscopy which utilizes the spectral information of soil samples to derive their properties. For the successful upscaling (i.e. use of Earth Observation tools) of soil spectroscopy it is important to create detailed soil spectral libraries on the ground, which assist in the validation of the sensors as well as development of soil models.

The Regional Soil Spectral Library

The current dataset contains a regional Vis-NIR (350-2500 nm) soil spectral library of the region. It contains metadata regarding the soils sampled, their key properties, and their spectral signatures. The spectral signatures were obtained using a standardization protocol. The dataset encompasses the following countries and soil properties:

Country	Samples	SOM	Texture	CaCO3	pH	NO3	EC	CEC
Albania	107	107	X	X	X	X	X	X
Bulgaria	105	105	X	X	X	X	X	105
Cyprus	96	96	94	96	96	X	93	X
Egypt	10	6	X	4	6	X	6	X
FYROM	124	124	124	X	124	X	X	X
Greece	928	928	928	928	X	928	X	X
Israel	221	106	193	150	137	X	141	X
Serbia	63	63	63	63	63	X	X	X
Turkey	100	94	96	100	100	X	100	X
All	1754	1629	1712	1341	631	991	334	108

available in these formats:

JSON PDF

via the DOI API

Form of the datasets

To assist future researchers using this soil spectral library, the datasets are provided in the following formats:

- Per country SSLs in .csv format
- Complete GEO-CRADLE SSL in .csv format

The documentation describing what each column represents may be found in D4.6.

Data and Resources

SSL Albania
This SSL was established by the Institute for Nature Conservation in Albania...

SSL Bulgaria
This SSL was established by the Space Research and Technology Institute (SRTI)...

SSL Cyprus
This SSL was established by the Cyprus University of Technology (CUT)...

SSL Egypt
This SSL was established by the Centre for Environment and Development for...

SSL FYROM
This SSL was established by the St. Cyril and Methodius University (USCM)...

SSL Greece
This SSL was established by the Inter-Balkan Environment Center (i-BEC)...

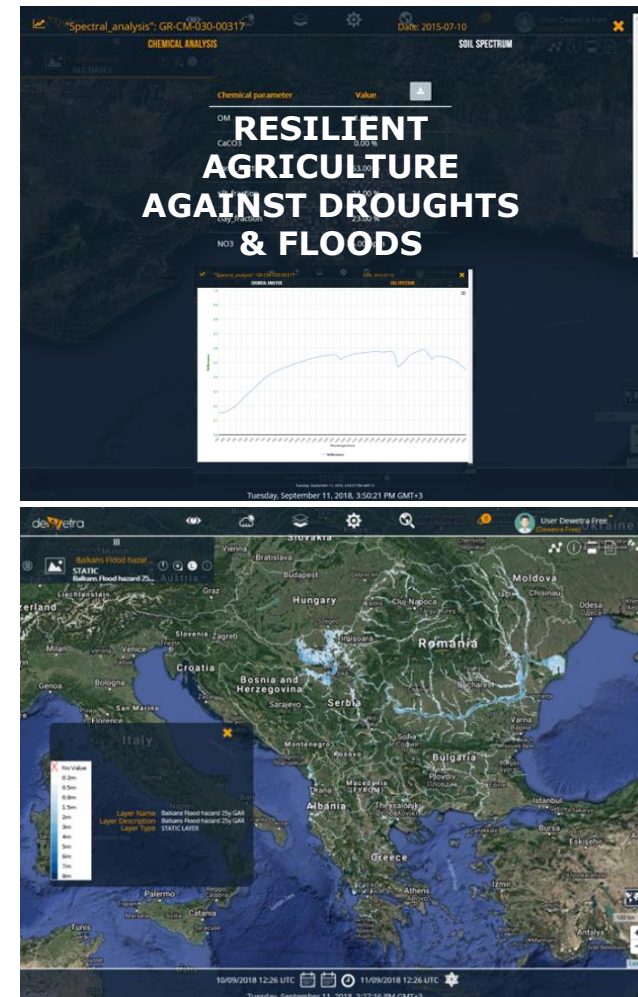
SSL Israel
This SSL was established by the Tel-Aviv University (TAU)...

SSL Serbia
This SSL was established by the Institute of Physics Belgrade (IPB)...

SSL Turkey
This SSL was established by the Space Technologies Research Institute (STIR)...

SSL GEO-CRADLE
This dataset contains the complete GEO-CRADLE SSL (i.e. all of the countries)...

Download All



Engagement of end-users:

Albania: Ministry of Environment, Ministry of Economic Development, Tourism, Trade & Entrepreneurship

Greece: The Agriculture Cooperatives of Nestos, NESPAR, and the Cooperatives of Xanthi, Eleftheroupoli, and Volvi

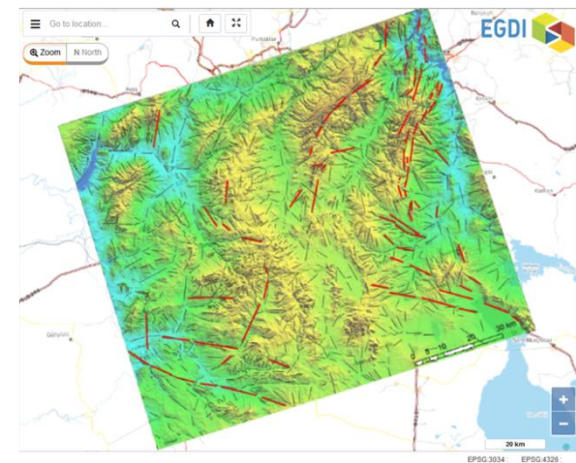
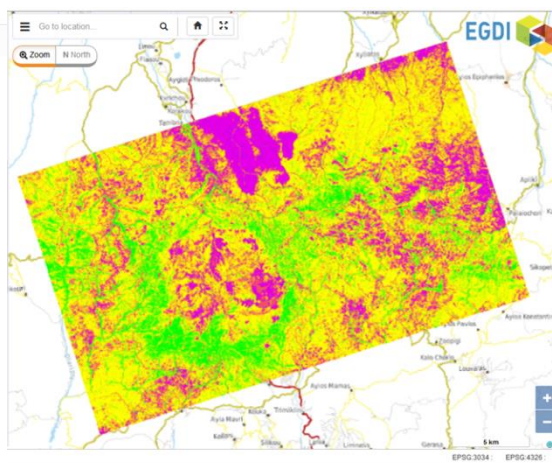
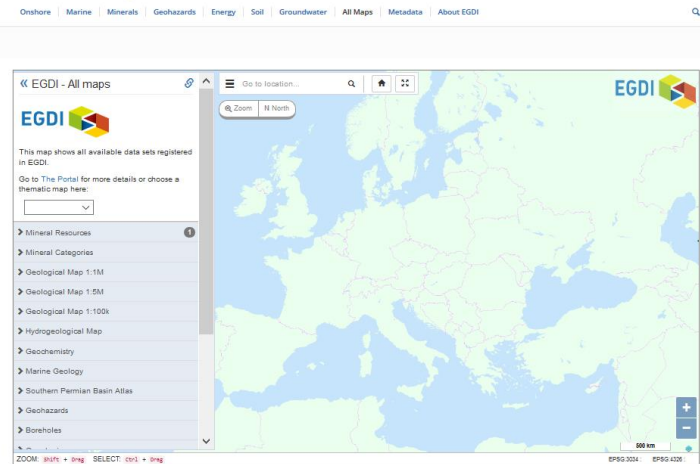
GEO's Secretariat

Results: Thematic 3 – Access to Raw Materials

EuroGeoSurveys' European Geological Data Infrastructure (EGDI):
Products for 3 countries (Greece, Cyprus, Turkey)



Onshore | Marine | Minerals | Geohazards | Energy | Soil | Groundwater | All Maps | Metadata | About EGDI



Engagement of end-users:

Greece: Ministry of Environment and Energy, Municipality of Alexandroupolis

Cyprus: Ministry of Agriculture, Rural Development and Environment, the Hellenic Copper Mines Ltd

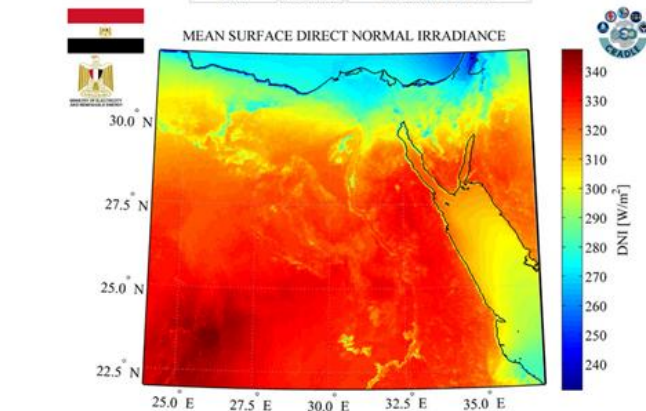
Turkey: JADE - Association of Geological Researches of Turkey, and JeoDijital Bilisim Teknoloji Madencilik in Turkey

Morocco: Minister of Energy, Mining, Water and Environment

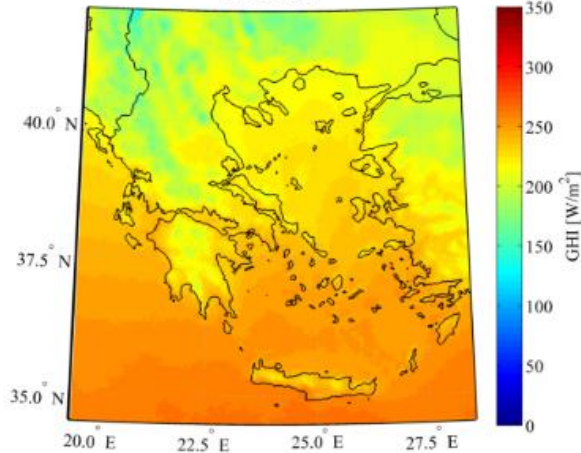
Algeria: Geological Survey of Algeria

Results: Thematic 4 – Access to Energy

Solar Atlas for Egypt and Greece:



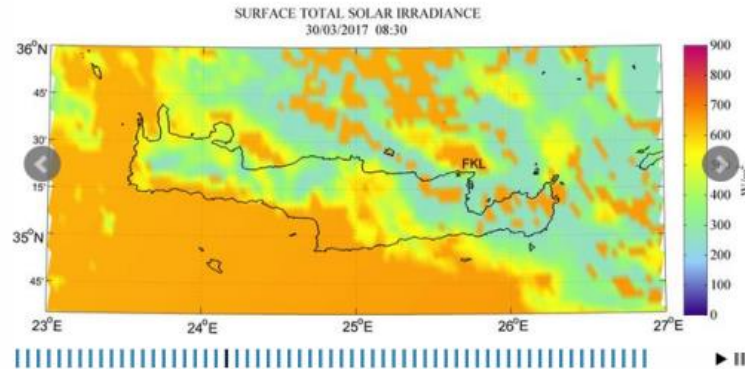
solea
ΕΠΙΦΑΝΕΙΑΚΗ ΟΛΙΚΗ ΗΛΙΑΚΗ ΑΚΤΙΝΟΒΟΛΙΑ
ΑΠΡΙΛΙΟΣ



ΠΡΟΤΥΠΟ ΕΠΕΝΔΥΣΗ ΠΕΡΙΒΑΛΛΟΝΤΟΣ & ΒΕΛΤΙΩΣΗ ΑΝΑΠΤΥΞΗΣ
ΕΛΛΗΝΙΚΗ ΔΗΜΟΚΡΑΤΙΑ

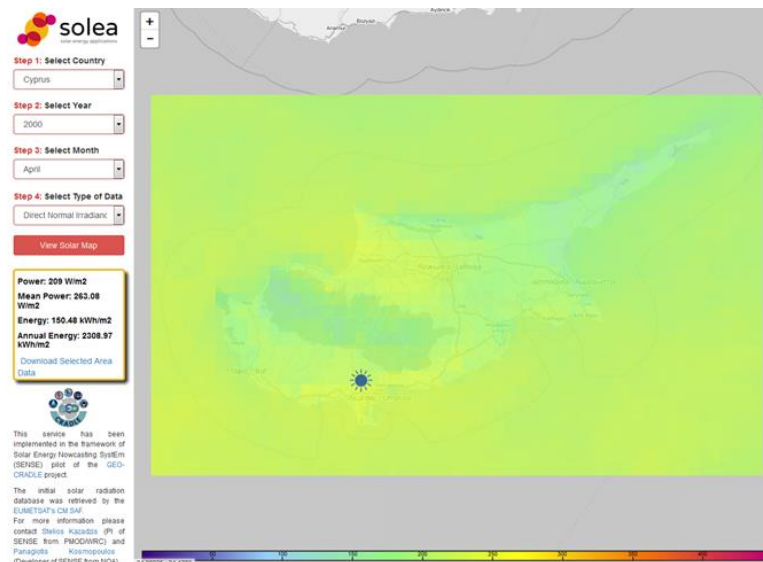
copyright 1999-2013 EUMETSAT

PRE-TECT campaign in Greece:



Graph 1.21: Surface total solar irradiance - 2017-03-30 08:30

PAR Atlas for Greece, Cyprus, Egypt:



Engagement
of end-users:

Egypt: Ministry of
Electricity and
Renewable Energy

Greece: National
Independent Power
Transmission
Operator, Attica
Group with
Bluestar and
Superfast Ferries,
National and
Kapodistrian
University of
Athens

Pre-tect campaign

Results: Capacity Building & Stakeholders Engagement

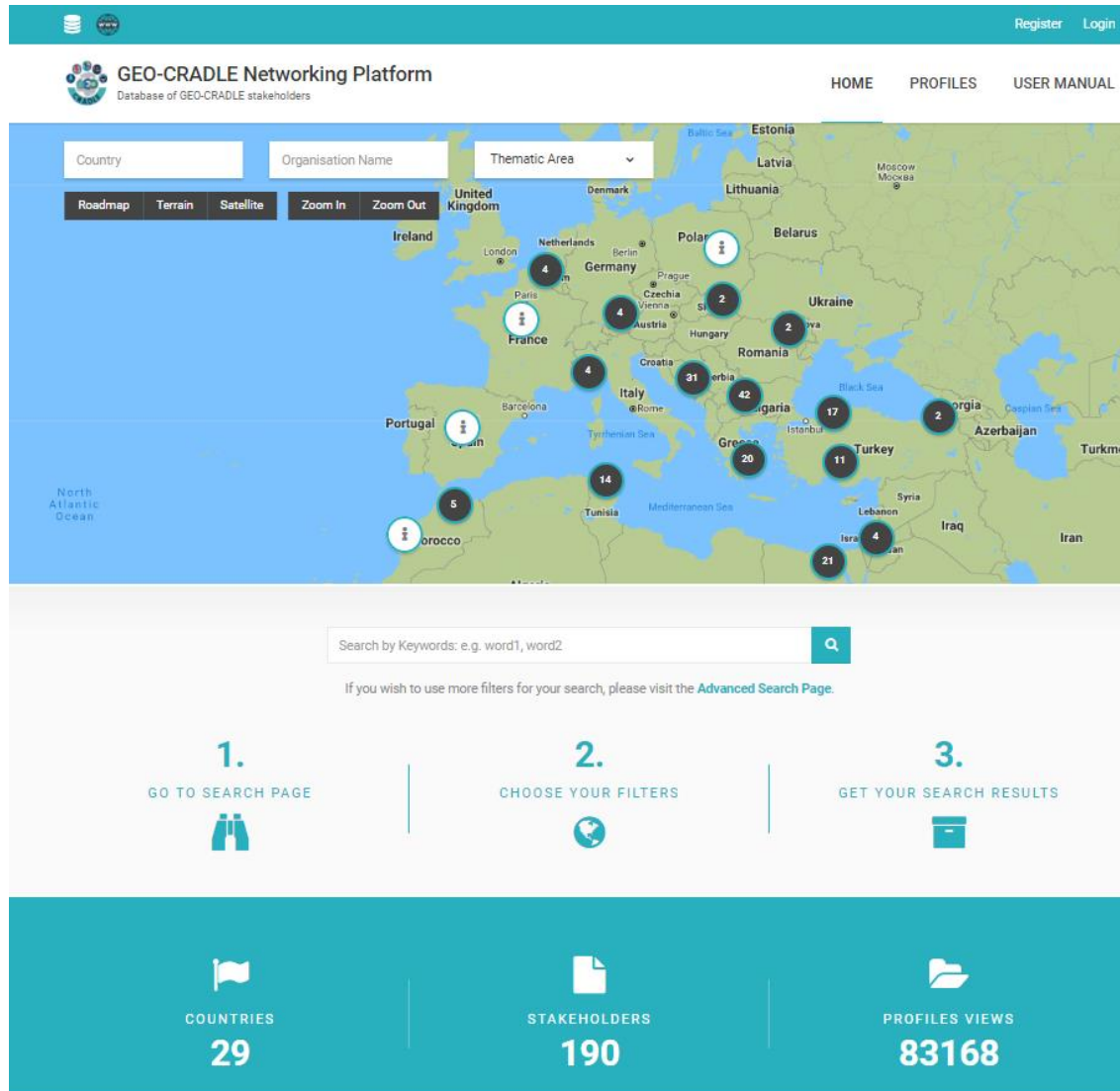
Date	Location
28/04/2016	Cairo, Egypt
14/07/2016	Novi Sad, Serbia
26/09/2016	Tirana, Albania
17-18/10/2016	Rabat, Morocco
19/10/2016	Timimoun, Algeria
16/11/2016	Limassol, Cyprus
03/01/2017	Chişinău, Moldova
02/02/2017	Abu Dhabi, United Arab Emirates
24/03/2017	Sofia, Bulgaria
26/04/2017	Brussels, Belgium (Industrial market)
09/05/2017	Magurele, Romania
25/05/2017	Cairo, Egypt
14/09/2017	Tel Aviv, Israel
07/12/2017	Tunis, Tunisia
15-16/03/2018	Istanbul, Turkey
04-05/06/2018	Thessaloniki, Greece (3 rd South-Eastern Europe GEO Workshop)

16 Regional Workshops have taken place in the **BAMENA** region:

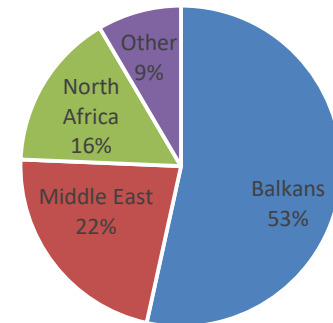
- advocating for free & open data policies in support of **GEO & INSPIRE** principles
- supporting **knowledge sharing - capacity building**
- providing a unique **cross-sector networking opportunity**
- identifying the potential **local challenges and needs** that can be addressed by Earth Observation
- enhancing **growth & innovation** in the geo-information sector
- enabling more **informed decision making**



Results: The Regional Networking Platform

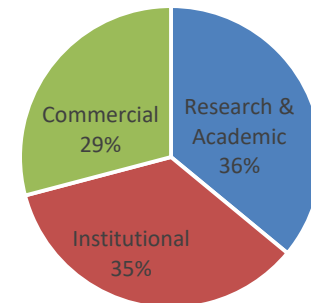


STAKEHOLDERS PER REGION



■ Balkans ■ Middle East ■ North Africa ■ Other

STAKEHOLDERS PER TYPE



■ Research & Academic ■ Institutional ■ Commercial

Results: The Regional Data Hub

25534239 datasets & 45 related portals and sites



Geocradle

Home Groups Datasets News

Log in

Home / Groups

Groups



Global Earth Observation System of Systems (GEOSS)

A central part of GEO's Mission is to build the Global Earth Observation System of Systems (GEOSS).

datasets



PILOT 1: Adaptation to Climate Change (ACC)

The RoI has been recognized by the Intergovernmental Panel on Climate Change as one of the most sensitive and vulnerable to climate change regions.

2 datasets



PILOT 2: Improved Food Security - Water Extremes Management (IFS)

Food security depends on many aspects such as water abundance and extremes (flooding and drought), vegetation stresses, yield monitoring, soil quality.

2 datasets



PILOT 3: Access to Raw Materials (ARM)

For the first time, GEO-CRADLE will make available in the RoI the roadmap for long-term monitoring, mapping, and management of mineral deposits, etc.

2 datasets



PILOT 4: Access to Energy (SENSE)

GEO-CRADLE will lead a coordinated effort to support and improve the regional EO infrastructures through the Solar Energy Nowcasting System (SENSE).

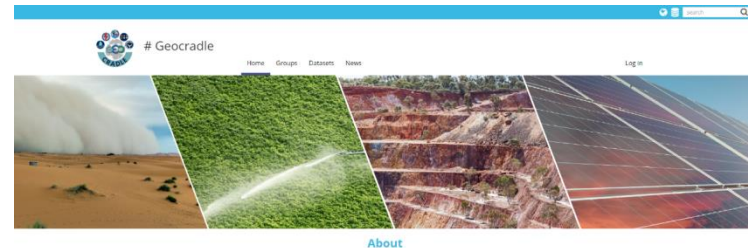
1 datasets



Related Portals and Sites

EO-Related websites and portals. Browse the portals and the sites to find, request or download data manually.

46 datasets



The Regional Data Hub (RDH) provides access to both region-related datasets, portals and services developed by a regional network of raw data providers, intermediate user/service providers, and users from Industry, Academia, and Public Sector from the region of interest, and also datasets and services directly fed from the GEOSS portal. Moreover, being the centralized gateway for regional data providers to contribute easily and timely their products to GEOSS, the Regional Data Hub is designed to become the focal node in the region in the context of GEOSS and Copernicus implementation. The RDH facilitates access to downloadable files of spaceborne data from real-time EO satellite missions acquisitions; data from airborne campaigns performed in the region; In-situ data; and Models such as Atmospheric and Climate.



Geocradle

Home Groups Datasets News

Log in

Home / Groups / PILOT 1: Adaptation to Climate Change (ACC)

View Members



PILOT 1: Adaptation to Climate Change (ACC)

The RoI has been recognized by the Intergovernmental Panel on Climate Change as one of the most sensitive and vulnerable to climate change regions on Earth. Climate change is governed to a large...

Members (2)

Date Changed

December 13, 2017 (1)

November 23, 2017 (1)

PILOT 1: Adaptation to Climate Change (ACC)

Search

Sort by

Order

Date Changed

Descending

Apply

Displaying 1 - 2 of 2 datasets



ACC-DUST

PILOT 1: Adaptation to Climate Change (ACC)

Adaptation to Climate Change - Dust Pilot

1 Resource(s)



DEAR-Clima

PILOT 1: Adaptation to Climate Change (ACC)

The DEAR-Clima (Data Extraction Application for Regional Climate) is a user friendly interactive web application tool that visualizes and provides time series of essential climate variables and climate indices based on high

2 Resource(s)

Results: The Roadmap

GEO-CRADLE Gap Analysis

- Findings of previous projects
- Inventory of EO capacities
- User Requirements Analysis
- Regional Priorities

EO Maturity Indicators

- National EO Capacities
- National User Uptake and Market Penetration
- International Cooperation

Existing Documentation

- GEO/GEOSS
- Copernicus
- Other Flagship initiatives, instruments & programmes

Project Partners

- State-of-play of EO at national level
- Insights on national markets
- Relaying insights by users

Analysis and synthesis by GEO-CRADLE

- Construct thorough picture of current state-of-play at regional level
- Identify key opportunities and major weaknesses/challenges in the region
- Define who, what, when, how in form of action plan

External Experts

- Insights through dedicated workshops
- Interviews with demand/supply actors
- Thematic expertise by advisory board

Guides

the implementation of GEOSS and the uptake of Copernicus in the RoI

Assesses

the readiness and maturity of each country in the RoI

Lays out

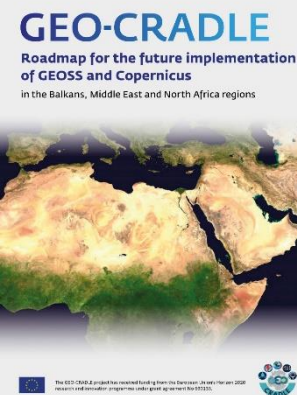
the actions for the long-term response to major regional challenges in the RoI

Paves

the ground for a potential regional large initiative

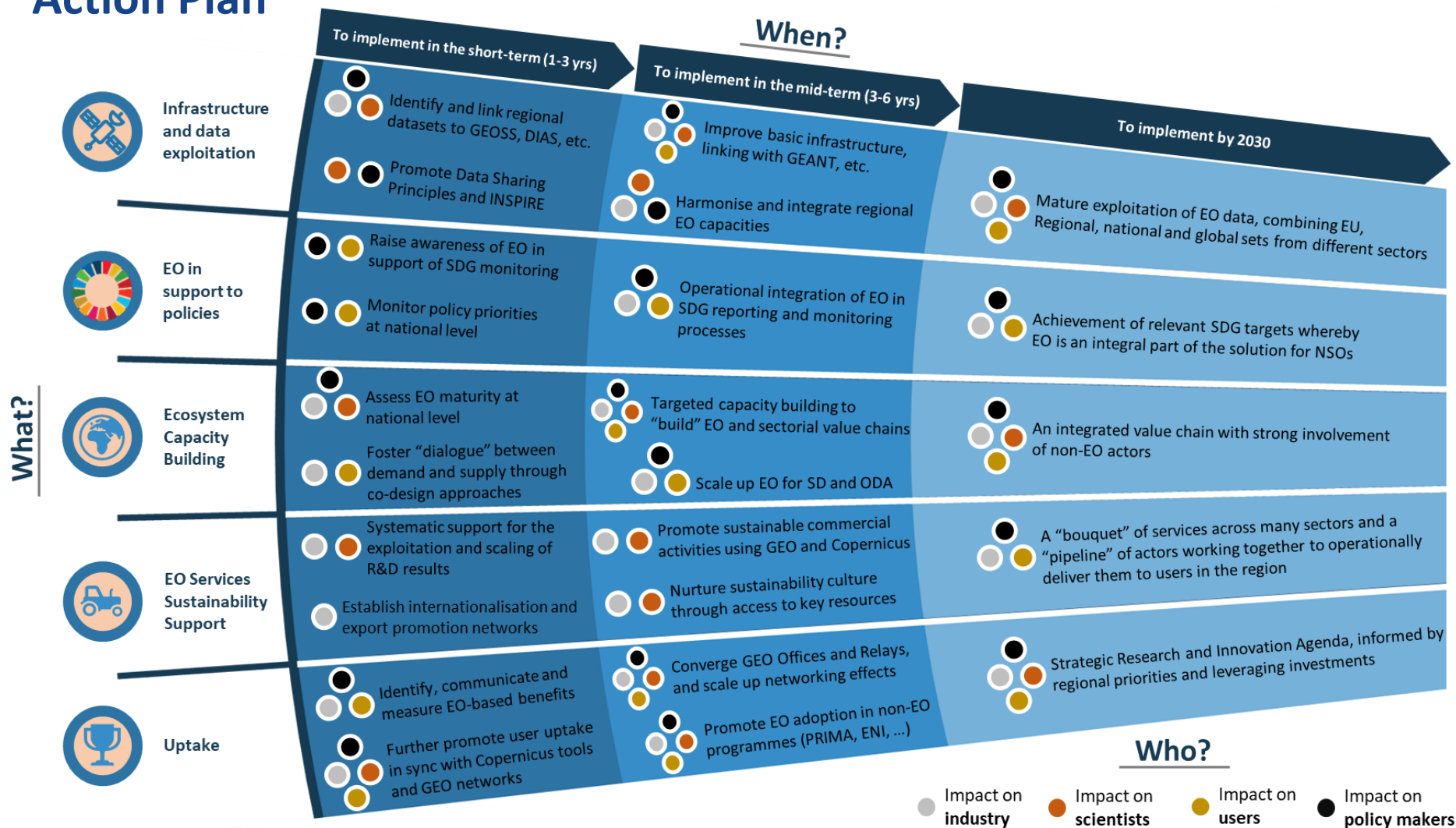
Roadmap

- Short vs long term actions for uptake of GEO and Copernicus
- Strategies for cross-fertilisation of programmes and activities
- Long-term exploitation of regional capacities/capabilities



Results: The Roadmap

Action Plan



Results: The Roadmap

Action Plan

Action 1: Identify and link regional datasets to **GEOSS Platform**, DIAS and data gateways

Action 2: Promote Data Sharing Principles and INSPIRE

Action 3: Improve **basic infrastructure**, linking with GEANT, etc

Action 4: Harmonise and integrate regional EO capacities

Action 5: Raise awareness of **EO in support of SDG monitoring**

Action 6: Monitor **policy priorities** at national level

Action 7: Foster operational integration of EO in SDG reporting and monitoring processes

Action 8: Assess **EO maturity** at national level

Action 9: Foster “dialogue” between demand and supply through co-design approaches

Action 10: Carry out targeted capacity building to “build” **EO and sectorial value chains**

Action 11: Scale up EO for Sustainable Development and ODA

Action 12: Provide systematic support for the exploitation and scaling of R&D results

Action 13: Establish internationalisation and **export promotion networks**

Action 14: Promote sustainable commercial activities using GEO and Copernicus

Action 15: Nurture sustainability culture through access to key resources

Action 16: Identify, **communicate and measure EO-based benefits**

Action 17: Further promote user uptake in sync with Copernicus tools and GEO networks

Action 18: **Converge GEO Offices and Relays**, and scale up networking effects

Action 19: Promote **EO adoption in non-EO programmes** (PRIMA, ENI, ...)

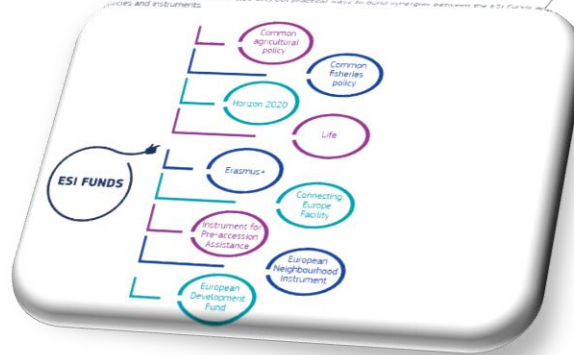
Action 20: Develop and implement a Strategic Research and Innovation Agenda, informed by regional priorities and leveraging investments

Results: The Roadmap

Action Plan

- DEVELOP AND IMPLEMENT A **STRATEGIC RESEARCH AND INNOVATION AGENDA** , INFORMED BY REGIONAL PRIORITIES AND LEVERAGING EXISTING INVESTMENTS
- EXPLOIT EXISTING **FUNDING INSTRUMENTS** IN SUPPORT TO **CAPACITY BUILDING AND SERVICE DELIVERY**
- ENSURE THE **ENGAGEMENT OF LOCAL ACTORS** IN EU PARTNERSHIP
- SUPPORT THE **DEVELOPMENT OF NEW EO SERVICES** FOR **SDG MONITORING AND POLICY PRIORITIES** AT NATIONAL LEVEL
- CARRY OUT **TARGETED CAPACITY BUILDING ACTIONS** FOR BUILDING EO **SECTORIAL VALUE CHAINS**
- CAPITALISE ON EXISTING INITIATIVES e.g. GEO-CARDLE, AFRIGE OSS, EUROGE OSS, TO **FOSTER HARMONISATION AND SERVICE DEVELOPMENT** BY INTEGRATING REGIONAL CAPACITIES, SKILLS
- IDENTIFY AND INTEGRATE **REGIONAL DATA** SETS AND OPEN THEM TO WIDELY USED PORTALS e.g. GEOSS GCI, DIAS, OTHER REGIONAL GATEWAYS (GEO-CRADLE RDH)
- PROMOTE **OPEN DATA SHARING** PRINCIPLES
- SUPPORT THE **DEVELOPMENT OF NEW DATA PORTALS** USING OPEN STANDARDS
- DEVELOP THE **INFRASTRUCTURE FOR FACILITATING FAST ACCESS TO EO DATA** BY LINKING TO GEANT , DIAS, SENTINEL DATAHUBS, etc
- **CONVERGE GEO OFFICES AND RELAYS** AND **SCALE UP NETWORKING IN THE REGIONS**

The GEO-CRADLE Initiative: Raise Awareness on Funding Resources



The GEO-CRADLE Initiative: Proposal Submission in EU Calls

Short info about the call

EuroGEOSS (www.eurogeoss.eu) is a H2020 Innovation Action call under Work Programme Year H2020-2018-2020 whose main objective is to **strengthen the benefits for Europe of the Global Earth Observation System of Systems (GEOSS)**. The main objective of this project is to accelerate users' uptake of open Earth Observation (EO) data and information for the benefit of Europe, through the effective use of European EO resources (including space, airborne, in-situ measurements and citizen observations) to prepare for operational environmental forecasting, and for mitigation and adaptation actions through **building on Copernicus services and GEOSS initiatives and flagships**.

Funding scheme

H2020 rules

Submission

It is a 2-stage proposal in which 55 organizations participated, under ARMINES coordination and NOA's participation as a key partner. Among the vast and multidisciplinary types of organizations, several members of the GEO-CRADLE consortium and networking platform participated.



No	Organization	Role in GEO-CRADLE
1	NOA (National Observatory of Athens / IAASARS)	Project Coordinator of GEO-CRADLE
2	i-BEC (inter-Balkan Environment Center)	Consortium Partner of GEO-CRADLE, Regional Coordinator
3	CEDARE (Centre for Environment and Development for the Arab Region and Europe)	Consortium Partner of GEO-CRADLE, Regional Coordinator
4	EARSC (European Association of Remote Sensing Companies)	Consortium Partner of GEO-CRADLE
5	PMOD/WRC (Physikalisch-Meteorologisches Observatorium Davos / World Radiation Center)	Consortium Partner of GEO-CRADLE
6	CIMA (Centro Internazionale in Monitoraggio Ambientale)	Consortium Partner of GEO-CRADLE
7	TAU (Tel Aviv University)	Consortium Partner of GEO-CRADLE
8	EGS (EuroGeoSurveys)	Consortium Partner of GEO-CRADLE
9	BIOSENSE INSTITUTE (Research and Development Institute for Information Tech)	Member of the GEO-CRADLE Networking Platform
10	AoA (ACADEMY OF ATHENS)	Member of the GEO-CRADLE Networking Platform
11	EVENFLOW	Member of the GEO-CRADLE Networking Platform
12	DRAXIS ENVIRONMENTAL S.A.	Member of the GEO-CRADLE Networking Platform
13	NEUROPUBLIC S.A.	Member of the GEO-CRADLE Networking Platform

The GEO-CRADLE Initiative: Proposal Submission in EU Calls

Short info about the call

PRIMA (<http://prima-med.org>) is a new Partnership for Research and Innovation in the Mediterranean Area, envisaged to develop (much-needed) solutions for a more sustainable management of water and agro-food systems. The main objective of this ten-year initiative (2018-2028) is to devise new R&I approaches to improve water availability and sustainable agriculture production in a region heavily distressed by climate change, urbanisation and population growth. PRIMA is being financed through a combination of funding from participating countries (currently €274 million), and a €220 million contribution from the EU through Horizon 2020, its research and innovation funding programme (2014-2020). PRIMA programmes support research and innovation through distinct types of actions/activities:

- In Section 1: Research & Innovation Actions (RIA), and Innovation Actions (IA) as defined in the General Annexes of H2020.
- In Section 2: Research and Innovation Activities (RIA*[2]) based on national rules.
- In Section 3: National research programmes (PSIAs).

Funding scheme: Based on National Regulations

Submission

NOA is coordinating under Section 2 - Thematic area 2: Sustainable farming systems under Mediterranean environmental constraints under Topic 1.2.1: Adaptation of Agriculture to Climate Change the submission of a proposal that will team up partners of the GEO-CRADLE project.



No	Organization	Role in GEO-CRADLE
1	NOA (National Observatory of Athens / IAASARS)	Project Coordinator of GEO-CRADLE
2	AUTH (Aristotle University of Thessaloniki)	Contributor to the Adaptation to Climate Change pilot implemented in the framework of GEO-CRADLE
3	CEDARE (Centre for Environment and Development for the Arab Region and Europe)	Consortium Partner of GEO-CRADLE, Regional Coordinator
4	TUBITAK UZAY (Space Technologies Research Institute)	Consortium Partner of GEO-CRADLE
5	CIMA (Centro Internazionale in Monitoraggio Ambientale)	Consortium Partner of GEO-CRADLE
6	CERT (Centre of Telecommunications Studies and Research)	Consortium Partner of GEO-CRADLE
7	CUT (Cyprus University of Technology)	Consortium Partner of GEO-CRADLE

The GEO-CRADLE Initiative: Raise Awareness on Funding Resources



Short info about the call

CHIST-ERA (www.chistera.eu) is a 2017 **Call for Research Proposals** supporting 2 different topics: 1) Object recognition and manipulation by robots: Data sharing and experiment reproducibility (ORMR); & 2) Big data and process modelling for smart industry (BDSI). CHIST-ERA is a consortium of funding organizations with programmes supporting Information and Communication Sciences and Technologies (ICST). The CHIST-ERA consortium is itself supported by the European Union's Future & Emerging Technologies scheme (FET). **CHIST-ERA promotes multidisciplinary and transnational ICST research** with the potential to lead to significant breakthroughs. The funding organizations jointly support research projects selected in the framework of CHIST-ERA, **in order to reinforce European capabilities in selected topics.**

Funding scheme

National funding organization, thus each partner must fulfil the conditions of the funding organisation they are applying to.

Submission

Under NOA's coordination a proposal has been submitted on 2017-01-11 that teams up with 2 partners and 1 end-user of the GEO-CRADLE project.

Short info about the call

EO4SD (Larger scale EO exploitation activities in support of sustainable development initiative) is an ESA tender (EOP-SEI/SNC/VAE_SOW/17-027) aiming at building long-term sustainable use of EO-derived information services to support international development activities (e.g. World Bank, Asian Bank etc.). It focuses on 4 specific thematic domains of sustainable development, namely:

- Climate Resilience
- Disaster Risk Reduction
- Marine & Coastal Resources Management
- States Affected by Fragility, Conflict & Violence

Funding scheme

EC-ESA funding.

Submission

Under GMV's coordination the proposal was submitted in October 2017. NOA is one of the partners and exploits the "EO capacity building" competences that have been radically developed through the GEO-CRADLE project. In addition, SIGE, a Tunisian local company was reached through the GEO-CRADLE network, so as to act as a local office in this region.

No	Organization	Role in GEO-CRADLE
1	NOA (National Observatory of Athens / IAASARS)	Project Coordinator of GEO-CRADLE
2	PMOD/WRC (Physikalisch-Meteorologisches Observatorium Davos / World Radiation Center)	Consortium Partner of GEO-CRADLE
3	IPTO (Independent Power Transmission Operator of Greece)	End-User of the Solar Energy pilot implemented in the framework of GEO-CRADLE

No	Organization	Role in GEO-CRADLE
1	NOA (National Observatory of Athens / IAASARS)	Project Coordinator of GEO-CRADLE
2	SIGE (Société d'ingénierie géomatique et environnementale)	Member of the GEO-CRADLE Networking Platform

Areas Open to Collaboration

- Coordination of EO activities at regional level
- Capacity Building
- Networking & Stakeholders Engagement
- Assessment of EO maturity at national level
- **Operationalisation of EO-based services relevant to:**
 - **Adaptation to Climate Change**
 - **Improved Food Security & Water Extremes Management**
 - **Access to Raw Materials**
 - **Access to Energy**
 - **Disasters Management**
 - **Water Resources Management**
- Implementation of data sharing principles

thank you!



<http://geocradle.eu>

The **GEO-CRADLE** project has received funding from the European Union's **Horizon 2020** research and innovation programme under grant agreement No 690133



FOLLOW OUR ACTIVITIES | Twitter @geocradle | Facebook Geo-Cradle | Website geocradle.eu